

Elizabethtown College
FACT BOOK



Volume XXXIII (v. 1.0)
2011-2012

Table of Contents

Introduction	4
General Information	4
Mission and Identity Statement	4
Philosophy Statement.....	4
History	6
Accreditations	7
Governance and Administration.....	8
Board of Trustees.....	8
Senior Staff.....	12
Departmental Chairs (as of Fall 2011)	13
Faculty.....	14
Full-Time Faculty by Rank, Gender and Tenure.....	14
Full-Time Faculty by Tenure and Terminal Degree.....	15
Faculty by Department, Rank and Tenure (Fall 2011)	16
Full-Time Tenured and Tenure-track Faculty Salaries by Mean/Median Salaries (Nine Months)	17
Student/Faculty Ratios (FT and FTE).....	18
Students	19
First-Time First Year Students.....	19
First Year Student Admissions Data (Data as of June 1 st for upcoming fall semester).....	19
Selectivity	20
First Year Student Class Rank (Top 10%)	21
First Time, Full-Time First Year Students (Fall) – Gender and Ethnic Classification	22
First Time, Full-Time First Year Students (Fall) – Residency and Citizenship.....	23

SAT & High School Rank for First Time, Full-Time First Year Students (Fall) 24

First Year Student Composite SAT Scores 25

All Enrolled Students 26

 All Enrolled Students 26

 All Full-Time Students (Fall) by Ethnic Classification 27

 All Full-Time Students (Fall) by Housing Status (by Gender) 28

 Full-Time International Students (Fall) 29

 Full-Time Students (Fall) by Home State 30

 Full-Time Students (Fall) by Religious Affiliation 31

Retention and Graduation 32

 Retention Rates (Freshman-to-Sophomore) by Cohort (by Ethnicity/Citizenship) 33

 4, 5 & 6-Year Graduation Rates by Academic Year 34

 4, 5 & 6-Year Graduation Rates by Cohorts 35

 Graduation Rates by Number of Years (4, 5 and 6) 36

 6-Year Graduation Rates by Cohorts (by Ethnicity/Citizenship) 37

 Completions (1st Major Only) by Degree/Year/Gender 38

 Undergraduate Completions by Major 39

 Undergraduate Completions: Arts/Sciences versus Professional (Carnegie Classifications) 42

 CCEDL & Traditional Undergraduate Completions: Arts/Sciences versus Professional (Carnegie Classifications) 43

Academics 44

 Declared Majors (with required areas of interest) -Traditional Only 44

 Declared Minors – Traditional Only 51

 Grade Distribution and Mean G.P.A. by Semester 54

 Department Mean G.P.A. by Semester 55

 Honorary Degree Recipient 56

The High Library Holdings and Circulation..... 58

Finances 59

 Student Costs by Year 59

 Financial Aid Disbursement 60

 Operating Margin..... 62

 Net Student Revenue per FTE Student 63

 Endowment per Full-Time Student..... 64

 Unrestricted Annual Fund..... 65

 Total Gift Dollars by Year 66

 Student Discount Rate 67

 Debt Service Coverage 68

Center for Continuing Education and Distance Learning (CCEDL)..... 69

 CCEDL Fall Enrollment by Ethnicity 69

 CCEDL Undergraduate Completions: Arts/Sciences versus Professional (Based on Carnegie Classifications) 71

 Declared Majors – CCEDL Only 72

 Declared Minors – CCEDL Only 74

 CCEDL Revenues..... 75

 CCEDL Student Learning Satisfaction..... 76

 CCEDL Margin..... 77

Introduction

The purpose of this annual Elizabethtown College Fact Book is to provide institutional data and facts relating to the College.¹ It is compiled by the Office of Research and Planning and is intended to be a reliable source of facts and information relating to characteristics and trends. More detailed information may be requested by contacting the Office of Research and Planning.

General Information

Mission and Identity Statement

Molded by a commitment to “Educate for Service,” Elizabethtown College is a community of learners dedicated to educating students intellectually, socially, aesthetically, and ethically for lives of service and leadership as citizens of the world. As a comprehensive institution, the College offers academic programs in the liberal arts, sciences, and professional studies. Combining classroom instruction with experiential learning, these programs advance independent thought, personal integrity, and social responsibility as the foundations for a life of learning. Founded by members of the Church of the Brethren, the College believes that learning is most noble when used to benefit others and affirms the values of peace, nonviolence, human dignity, and social justice.

Philosophy Statement

Elizabethtown College engages students in a dynamic, integrated learning process that blends the liberal arts and professional studies. Challenged to take responsibility for their education, students at Elizabethtown embark on a journey of self-transformation that involves intellectual, social, and personal growth. The College is committed to educating the whole person within a relationship-centered learning community where common goals are achieved through engagement in a rigorous academic curriculum and thoughtful co-curricular experiences. Students are encouraged to develop and challenge their own values, while seeking to understand and appreciate alternative perspectives. Embedded in an ever-changing global context, the College promotes the developmental, collaborative, and complex nature of learning.

¹ Minor discrepancies in previously reported data may exist because of reconciliation of administrative data.

In seeking to “educate for service,” Elizabethtown College believes that students can perform no greater service than they do when sharing knowledge and creativity with others. Opportunities to strengthen scholarship and leadership extend beyond the classroom, and students learn actively through practical experiences and civic engagement.

The impact of an Elizabethtown College education is long lasting and far-reaching because it is deeply transformative. Students acquire new habits of mind and heart—some in the course of the undergraduate experience, others as students grow beyond college.

Elizabethtown College challenges students to:

- Assume responsibility for their intellectual development, personal growth, and well-being. They will sharpen their curiosity and become aware of the capabilities, strategies, and resources needed to learn.
- Reason, analyze, and engage in critical thinking. They will learn to make, systematically evaluate, and, if necessary, refute arguments and claims—both their own and those of others.
- Demonstrate thoughtful and articulate communication by applying knowledge in a variety of contexts including writing, speaking, listening and interpretation.
- Understand the creative process and its role in human expression, and cultivate the ability to make informed aesthetic judgments.
- Navigate diverse cultural worldviews and perspectives, with the realization that differing frames of reference influence analysis, communication, and behavior.
- Make reflective ethical decisions and act with integrity to seek just outcomes within relationships, communities, and society.
- Apply and integrate different strands of learning and comprehend interconnections in the process of gaining knowledge and experience.
- Identify and cultivate a sense of purpose that inspires a commitment to meaningful work in service to society.

Affirmed by the Faculty Assembly on 3/11/08
Approved by the Board of Trustees on 4/26/08

History

Elizabethtown College was chartered in 1899 by members of the Church of the Brethren who were interested in establishing an institution of higher education for their denomination in eastern Pennsylvania.

As expressed by the founders in the charter, the purpose of the College was "to give such harmonious development to the physical, mental, and moral powers of both sexes as will best fit them for the duties of life and promote their spiritual interests." While expressed in different words, the purpose of the College today still embodies the essence of this educational philosophy.

The Commonwealth of Pennsylvania granted a charter on September 23, 1899. Classes were held for the first time the following year. During its early years, limited enrollment and finances hampered the general development of the institution.

Supported initially by contributions from individual churchmen, the College in time became the responsibility of the Eastern (now the Atlantic Northeast) and Southern District of Pennsylvania of the Church of the Brethren. The Church Districts officially assumed the responsibility for operating the College in January 1919. With the advancing years, the College grew in the size of its enrollment, the extent of its physical facilities, and the quality of its academic program.

Formal accreditation was granted in 1921 by the Pennsylvania Department of Public Instruction and in 1948 by the Middle States Association of Colleges and Secondary Schools. The rate of growth increased significantly from the end of the Second World War. Student enrollment has more than quadrupled since that time. The academic program has been expanded and is continually revised to meet changing needs of students.

Accreditations

Elizabethtown College is accredited by the following:

- Middle States Commission for Higher Education (MSCHE) *
- American Chemical Society for Clinical Lab Services (ACS)
- National Association of Schools of Music (NASM)
- National Council on Social Work Education (CSWE)
- Accreditation Council for Occupational Therapy Education of the American Occupational Therapy Association (ACOTE)
- Association of Collegiate Business Schools and Programs (ACBSP)
- Accreditation Board for Engineering and Technology, Inc. for Computer Engineering and Engineering (ABET)

***Middle States Commission on Higher Education**
3624 Market Street
Philadelphia, PA 19104-2680
Telephone: 267-284-5000

Governance and Administration

Board of Trustees

Officers

Chairman of the Board

James E. Shreiner '73

Senior Executive Vice President
Fulton Financial Corporation
Lancaster, PA

Vice Chairman

Terry G. Koons '70

Chambersburg, PA

Treasurer

Thomas Meckley '67

Ernst & Young (retired)
Charlotte, NC

Secretary

Linda L. Castagna '67, Honorary Degree 2003
Lancaster, PA

Assistant Secretary

Dr. Edward E. White Jr. '00

Owner, Dentist
Elizabethtown Dental Associates
Elizabethtown, PA

Board of Trustee Members

David G. Benton P'04

Vice President & General Manager
The Rittenhouse Hotel & Condominium
Residences
Philadelphia, PA

Ray Cameron '62

Marketing Representative
The Bryn Mawr Trust Company
Wealth Management Hershey Division
Hershey, PA

James S. Clemens '70 P'99

President & CEO
Clemens Family Markets
Kulpsville, PA

Nevin D. Cooley

President and CEO
High Real Estate Group LLC
Lancaster, PA

Joyce M. Davis

President
The World Affairs Council of Harrisburg
Temple University Harrisburg
Harrisburg, PA

Rev. Warren Eshbach P'88

Susquehanna Valley Ministry Center
(retired)
Dover, PA

John W. Espenshade, Esq. '71

Attorney/Shareholder
Stevens & Lee
Lancaster, PA

Steven Falk '76

President & CEO
San Francisco Chamber of Commerce
San Francisco, CA

James L. Fritz, Esq. '84

McNees, Wallace & Nurick
Harrisburg, PA

Dr. Roberta L. Gartside '76

Plastic Surgeon
New Image Plastic Surgery Assoc., PLC
Reston, VA

Doris Gordon H'05

Executive Director
Accreditation Commission for
Audiology Education
Washington, DC

Dr. Albert Granger '83

President/Owner
Granger Endodontic Group
Garden City, NY

Mark A. Heckler '77, Ph.D.

President
Valparaiso University
Valparaiso, IN

Janice L. Holsinger '64 P'84, P'85

Founder/CEO
U-Gro Learning Centres, Inc.
Harrisburg, PA

David E. Hosler '72 H'10

Chief Operation Officer
Murray Risk Management & Insurance
Lancaster, PA

Robert C. Johansen, Ph.D.

Director of Doctoral Studies
Professor of Political Science and Peace
Studies
Kroc Institute
University of Notre Dame
Notre Dame, IN

Board of Trustee Members (cont'd.)

Daniel Jones '97

U.S. Senate Select Committee on
Intelligence
Washington, DC

Dr. Robert O. Kerr '64

Director, Clinical Research (retired)
Southwest Regional Cancer Center
Austin, TX

Rev. Wallace B. Landes

Senior Pastor (retired)
Palmyra Church of the Brethren
Palmyra, PA

Karl A. Lehman '74 P'02

Principal
Rager, Lehman and Houck, P.C.
Hanover, PA

P. Edward Lovelidge '82

Managing Partner
Pricewaterhouse Coopers, LLP
Philadelphia, PA

Mark D. Lyons '78

Chairman & CEO
Arch Insurance Group, Inc.
Jersey City, NJ

Michael J. Mason '72

Deputy Manager for Quality Assurance
Bechtel Corporation
Frederick, MD

Leanna Meiser '01

Corp. Social Responsibility Manager
The Hershey Company
Hershey, PA

John D. Miller Jr., Esq. P'06

Miller Poole & Lord
York, PA

Edward R. Murphy P'01

Facility Manager (retired)
West Publishing Company
East Stroudsburg, PA

Carl H. Myers '63 P'88

Managing Member
Fuel Gas Solutions, LLC
Wyomissing, PA

Stan Noffsinger (ex officio)

General Secretary
Church of the Brethren
Elgin, IL

Dusty Putnam '72

Vice President
Fenimore Asset Management
Cobleskill, NY

J. Alexander Risser '76

President/Owner
Outer Beaches Realty
Avon, NC

Dr. Thomas A. Risser '68

Assistant Professor of Medicine
Director, Cardiac Diagnostic Lab
The Cambridge Hospital
Cambridge Health Alliance/Harvard
Medical School
Cambridge, MA

Dr. Gurtej Singh '01

Interventional Spine and Rehabilitation
Medicine Specialist
Greater Baltimore Medical Center
Baltimore, MD

Rev. Craig H. Smith (ex officio)

District Executive
Atlantic Northeast District
Church of the Brethren
Elizabethtown, PA

Board of Trustee Members (cont'd.)

Dr. Carl J. Strikwerda, Ph.D. (ex officio)

President
Elizabethtown College
Elizabethtown, PA

Michael Spangler '88

President
Nationwide Investment Management
Group
King of Prussia, PA

David Sykes '70

President
DAVMAR Holding, Inc.
Mt. Pleasant, SC

Judy S. Ware '68

Ware Offices
Lancaster, PA

Patricia A. Warehime '76

Occupational Therapist
LIU #12
New Oxford, PA

Senior Staff

President.....	Carl J. Strikwerda, Ph.D.
Senior Vice President and Provost.....	Susan Traverso, Ph.D.
Vice President for Finance.....	Richard L. Bailey
Vice President for Administration.....	David B. Dentler
Vice President for Institutional Advancement.....	David C. Beidleman
Vice President for Enrollment.....	Paul M. Cramer
Dean of Faculty.....	E. Fletcher McClellan, Ph.D.
Dean of Students.....	Marianne Calenda
Dean of Continuing Education and Distance Learning.....	John J. Kokolus, Ph.D.
Director, Office of Research and Planning.....	Richard E. Basom, Jr., Ph.D.
Executive Director, Marketing and Communications.....	Elizabeth A. Braungard

Departmental Chairs (as of Fall 2011)

Academic Departments	Chair
Biology	Jonathon S. Coren
Business	Sanjay Paul
Chemistry.....	Kristi A. Kneas
Communications	Kirsten A. Johnson
Education	Carroll R. Tyminski
English	Louis F. Martin
Fine and Performing Arts.....	E. Douglas Bomberger
History	David S. Brown
Mathematical & Computer Sciences.....	James R. Hughes
Modern Languages.....	Monteserrat Linares-Farras
Occupational Therapy	Judy B. Ericksen
Philosophy.....	Michael D. Silberstein
Physical Education and Health.....	Nancy J. Latimore
Physics & Engineering.....	Michael A. Scanlin
Political Science.....	April C. Kelly-Woessner
Psychology.....	Catherine E. Lemley
Religious Studies.....	Jeffery D. Long
Social Work.....	Susan C. Mapp
Sociology and Anthropology.....	Elizabeth A. Newell

Faculty

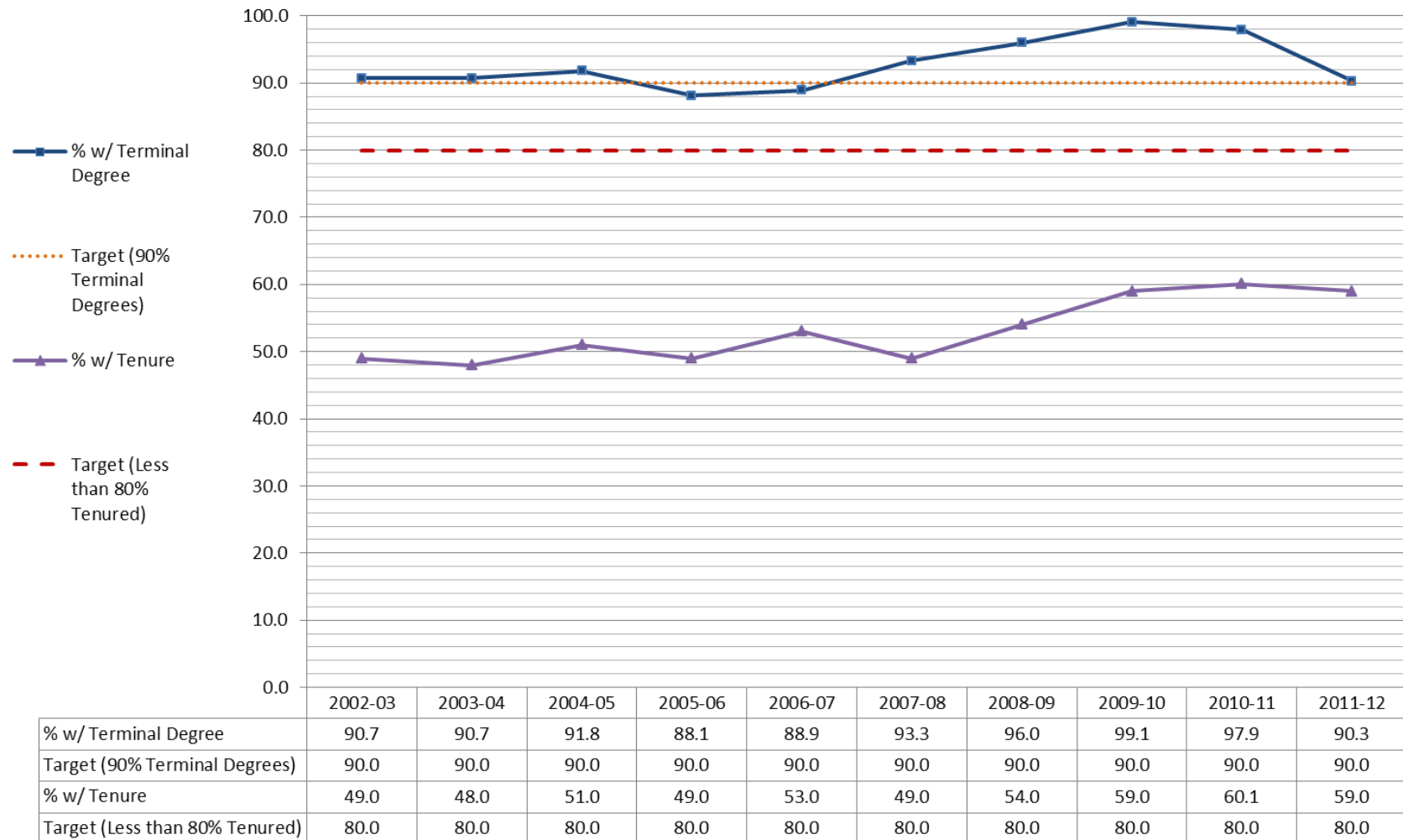
Full-Time Faculty by Rank, Gender and Tenure

	2001-02	2002-03	2003-04	2004-05	2005-06	2006-07	2007-08	2008-09	2009-10	2010-11	2011-12
Number of:											
Professors	23	21	25	25	22	21	21	24	22.5	25.5	26.5
Associate Professors	49	51	51	55	54.5	52	59	58	57.5	54	56
Assistant Professors	30	35	34	33	37	41	39	37	32	35	32
Instructors	2	2	0	0	0	1	0.5	1	1	1	0
FT Teaching Lecturers	6	9	16	12	11	10.5	12	10.5	10.5	12.5	14.5
Total	110	118	126	125	124.5	125.5	131.5	130.5	123.5	128	129
Percentage of:											
Professors	21	18	21	20	18	17	16	18	18	20	21
Associate Professors	45	43	40	44	44	41	45	44	47	42	43
Assistant Professors	28	25	27	26	30	33	30	28	30	27	25
Instructors	1	2	0	0	0	1	0	0	0	0.01	0.00
FT Teaching Lecturers	5	5	13	10	9	8	9	8	8	0.10	0.11
Number of:											
Men	69	71	75	76	71.5	74	67	66	70.5	72.5	74.5
Women	41	47	51	49	53	51.5	64.5	64.5	53	55.5	54.5
Total	110	118	126	125	124.5	125.5	131.5	130.5	123.5	128	129
Percentage of:											
Men	63	60	60	61	57	59	51	51	57	57	58
Women	37	40	40	39	43	41	49	49	43	43	42
Number Tenured:	66	58	60	64	61	66	64	70	71.5	75.5	75.5
Percentage Tenured:	60	49	48	51	49	53	49	54	58	59	59

- Data source: The Office of the Provost and Senior Vice President
- Excludes CCEDL data
- Department totals include faculty on sabbatical and include visiting positions; does not include open lines

Full-Time Faculty by Tenure and Terminal Degree

Faculty by Tenure and Terminal Degree
(Percentages)



- Data source: Human Resources
- Excludes CCEDL data and lecturers and Physical Education faculty

Faculty by Department, Rank and Tenure (Fall 2011)

Department	Rank					Department Total	Number Tenured	Credits of PT Faculty ¹	FTE of PT Faculty
	Professor	Associate	Assistant	Instructor	Lecturer				
Biology	2	3	3	0	0	8	5	24	2.00
Business	1	6	2	0	4	13	7	28	2.33
Chemistry & Biochemistry	0	3	2	0	0	5	3	10	0.83
Communications	1	2	2	0	1	6	3	10	0.83
Education	0	5	2	3	0	10	5	28	2.33
English	3.5	5	2	1	0	11.5	8.5	40	3.33
Fine & Performing Arts	4	3	6	1	0	14	7	47.67	3.97
Lessons								45.33	3.78
History	1.5	2.5	0	0	0	4	3	0	0.00
Mathematical & Computer Sciences	3	5	2	0	1	11	8	12	1.00
Modern Languages	0.5	4	2	0	0	6.5	4.5	26	2.17
Occupational Therapy	0	4	1	0	2.5	7.5	1	11	0.92
Philosophy	2	0.5	0	0	0	2.5	2.5	4	0.33
Physical Education								12	1.00
Physics and Engineering	2	3	2	0	0	7	5	17	1.42
Political Science	1	1	3	0	0	5	2	6	0.50
Psychology	3	2	1	0	0	6	4	4	0.33
Religious Studies	1	2	0	0	0	3	3	4	0.33
Social Work	1	2	1	0	0	4	3	8	0.67
Sociology/Anthropology	0	4	1	0	0	5	4	10	0.83
Interdisciplinary (WGS,PCS)						0		4	0.33
Totals	26.5	57	32	5	8.5	129	78.5	351	29.23

- Data Source: The Office of the Provost and Registration & Records.
- Excludes CCEDL data.
- Does not include courses taught by FT administrators who are not separately compensated for their teaching. Department totals include faculty on sabbatical and include visiting positions; do not include open lines.
- ¹Calculated on credit/lab hours taught
Education includes 18 credits for Methods and Student Teacher Supervision

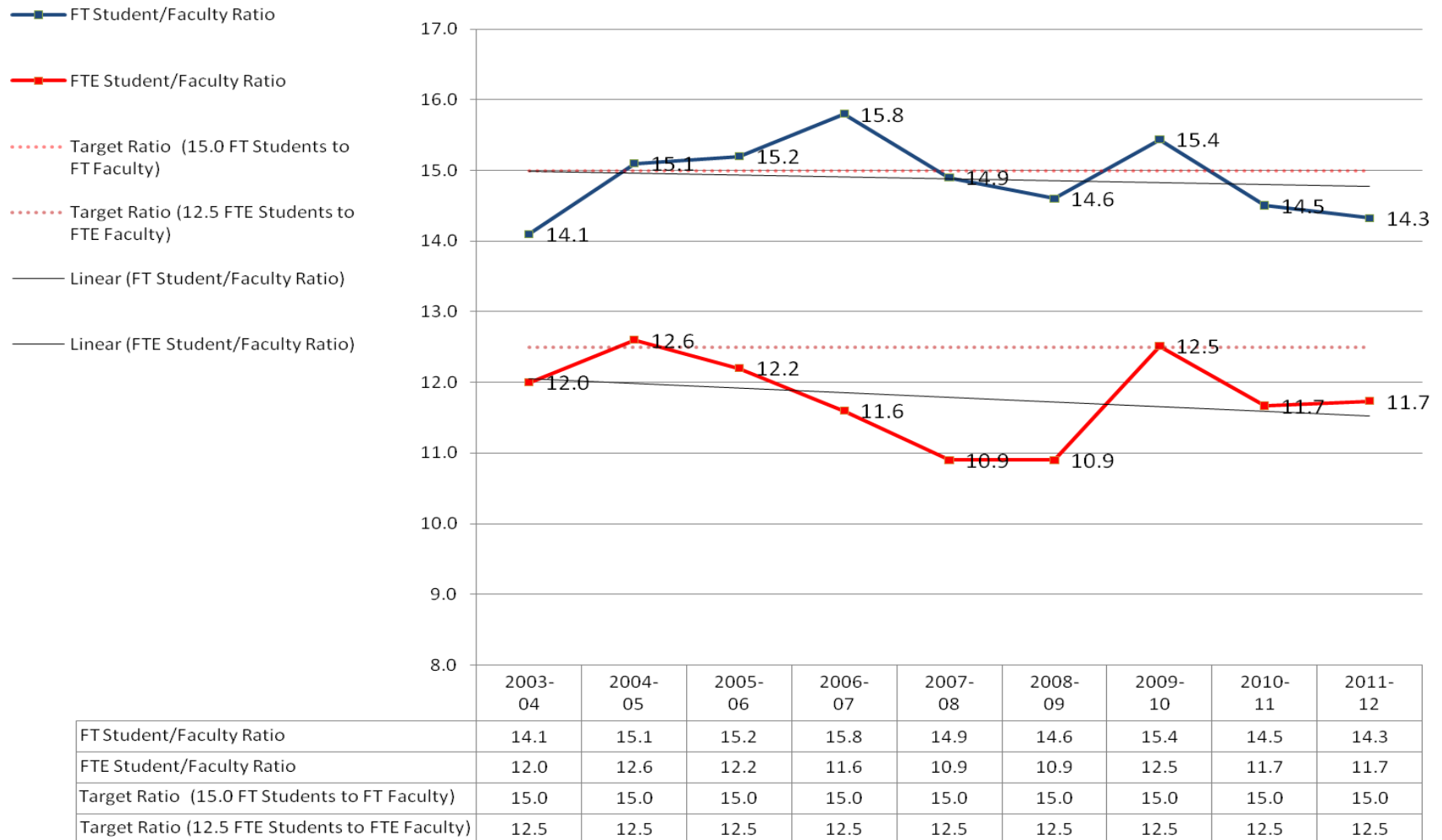
Full-Time Tenured and Tenure-track Faculty Salaries by Mean/Median Salaries (Nine Months)

Year	Professors			Associate Professors			Assistant Professors		
	Mean	Median	Minimum Base Salary	Mean	Median	Minimum Base Salary	Mean	Median	Minimum Base Salary
2000-01	\$68,777	\$69,797	n/a	\$52,667	\$54,492	n/a	\$43,090	\$45,062	n/a
2001-02	\$70,649	\$71,499	n/a	\$56,916	\$55,436	n/a	\$46,105	\$43,930	n/a
2002-03	\$69,635	\$72,185	n/a	\$56,656	\$55,719	n/a	\$46,085	\$44,990	n/a
2003-04	\$72,156	\$73,849	\$61,540	\$57,942	\$57,442	\$54,110	\$49,985	\$47,983	\$42,440
2004-05	\$72,528	\$74,989	\$62,590	\$59,915	\$58,477	\$55,030	\$50,666	\$47,799	\$43,170
2005-06	\$75,697	\$76,620	\$64,468	\$61,573	\$60,111	\$56,680	\$51,066	\$49,031	\$44,465
2006-07	\$74,716	\$72,951	\$67,050	\$62,994	\$62,465	\$58,950	\$57,669	\$51,347	\$46,245
2007-08	\$77,387	\$75,480	\$70,429	\$66,294	\$63,964	\$61,072	\$55,119	\$54,000	\$47,910
2008-09	\$82,037	\$77,720	\$72,965	\$68,632	\$66,267	\$63,271	\$56,703	\$55,811	\$49,635
2009-10	\$85,170	\$79,754	\$74,424	\$69,629	\$66,913	64,536	\$59,609	\$57,063	\$50,628
2010-11	\$85,878	\$80,542	\$74,424	\$66,217	\$66,857	\$64,536	\$58,266	\$55,000	\$50,628
2011-12	\$86,456	\$82,126	\$75,912	\$70,862	\$68,644	\$65,827	\$59,364	\$56,550	\$51,641

- Data source: Human Resources
- Included Only Tenured and Tenure-Track Faculty
- Excludes CCEDL data

Student/Faculty Ratios (FT and FTE)

Student to Faculty Ratios



- Data source: Registration and Records
- Excludes CCEDL data

Students

First-Time First Year Students

First Year Student Admissions Data (Data as of June 1st for upcoming fall semester)

	2009-2010				2010-2011				2011-2012			
	Male	Female	Unknown	Total	Male	Female	Unknown	Total	Male	Female	Unknown	Total
Inquiries	8,271	16,846	0	25,117	8,526	17,106	0	26,763	7,938	17,192	0	25,229
Interviews	436	651	0	1087	372	670	0	1,042	390	747	0	1,137
Applications Rec'd	1,172	2,150	0	3,322	1,139	2,190	0	3,329	1,217	2,448	0	3,665
Withdrawn (1)	218	346	0	564	228	392	0	620	281	545	0	826
Denied	110	161	0	271	81	124	0	205	132	296	0	428
Accepted	844	1,643	0	2,487	819	1,662	0	2,481	804	1,607	0	2,411
Declined (2)	628	1,291	0	1,919	640	1,358	0	1,998	625	1,263	0	1,888
Matriculated	216	352	0	568	190	316	0	506	179	344	0	523
% Accepted (3)	72.0%	76.4%		74.9%	71.9%	75.9%		74.5%	66.1%	65.6%		65.8%
% Yield (4)	25.6%	21.4%		22.8%	23.2%	19.0%		20.4*	22.3%	21.4%		21.4%

(1) Withdrawn or incomplete file

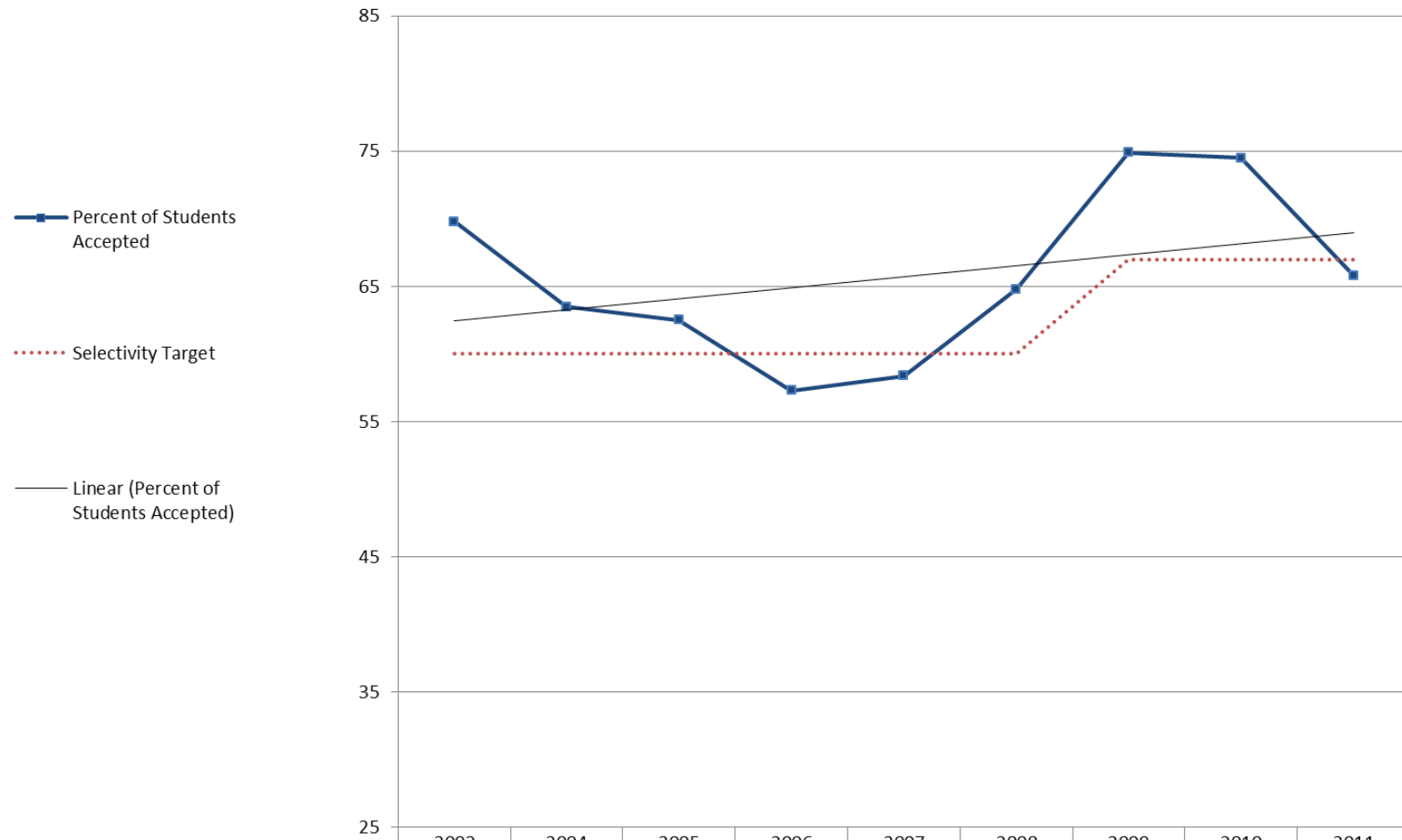
(2) Declined, cancelled, or no show

(3) Accepted/applications received

(4) Matriculated/accepted

- Data source: Admissions Office
- Data reflects June 1st Admission numbers
- Excludes CCEDL data

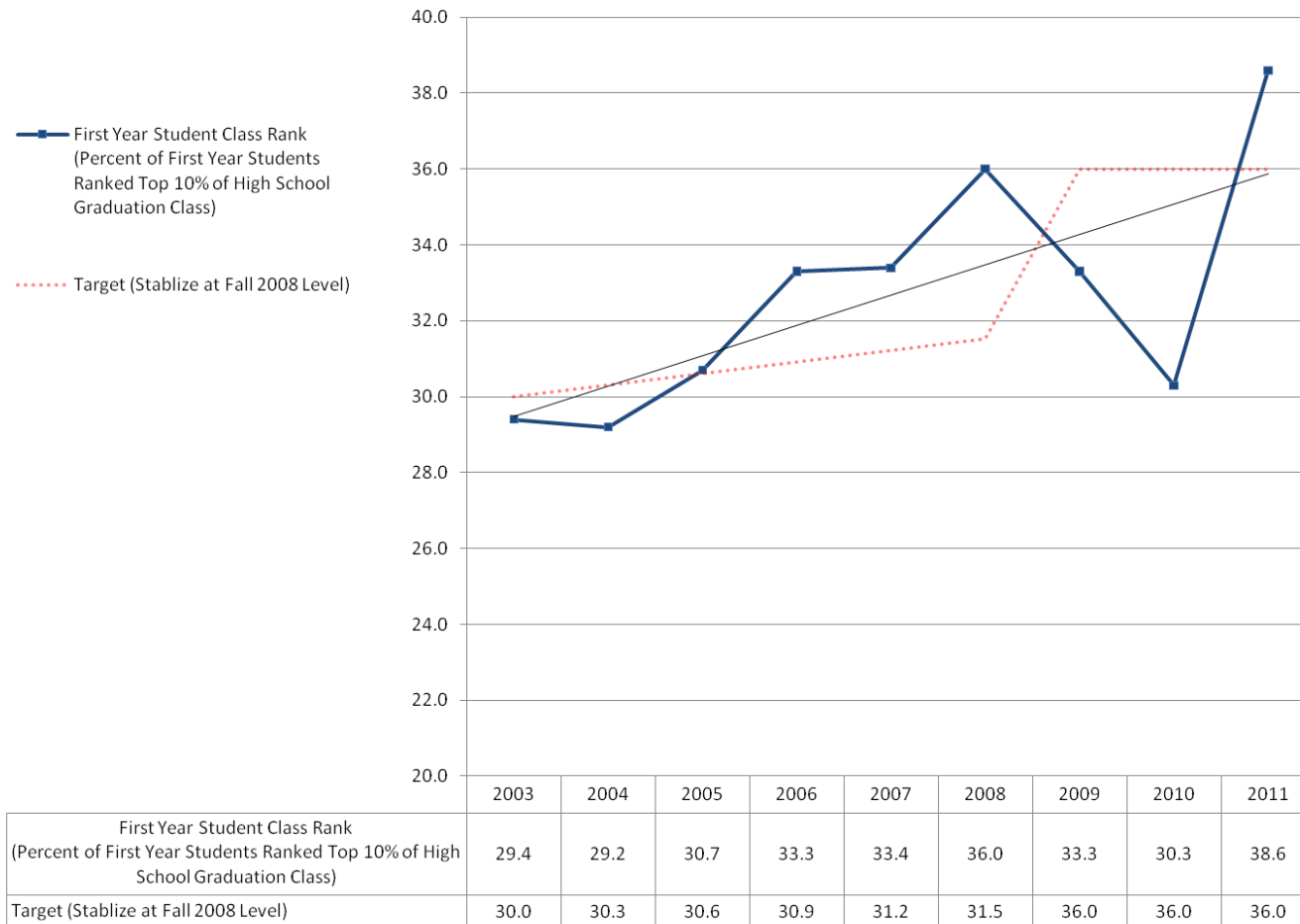
Selectivity
Selectivity



	2003	2004	2005	2006	2007	2008	2009	2010	2011
Percent of Students Accepted	69.8	63.5	62.5	57.3	58.4	64.8	74.9	74.5	65.8
Selectivity Target	60	60	60	60	60	60	67	67	67

- **Data source: Admissions Office**
- **Data reflects June 1st Admission numbers**
- **Excludes CCEDL data**

**First Year Student Class Rank (Top 10%)
Cohort Class Rank (Top 10%)**



- **Data source: Admissions Office**
- **Data reflects June 1st Admission numbers**
- **Excludes CCEDL data**

First Time, Full-Time First Year Students (Fall) – Gender and Ethnic Classification

Year	Total Students	Gender		Ethnic Classification								
		Male	Female	White	Black or African American	Hispanic	Asian	American Indian or Alaska Native	Native Hawaiian or Other Pacific Islanders	Two or More Races	Race and Ethnicity Unknown	International
2000	476	156	320	444	9	8	15	0	*	*	*	*
2001	518	195	323	490	7	10	9	2	*	*	*	*
2002	462	153	309	428	12	9	13	0	*	*	*	*
2003	496	170	326	463	7	8	17	1	*	*	*	*
2004	536	190	346	510	7	4	14	1	*	*	*	*
2005	508	165	343	472	9	8	11	0	*	*	*	*
2006	529	183	346	498	8	5	16	1	*	*	*	*
2007	487	163	324	447	12	15	10	2	*	*	*	*
2008	509	178	331	458	15	14	21	1	*	*	*	*
2009	547	205	342	492	15	10	22	3	2	2	1	*
2010	491	187	304	426	16	12	12	1	0	5	0	19
2011	511	174	337	444	14	18	11	2	2	6	0	14

* Undetermined

- Data source: Registration and Records
- Excludes CCEDL Data
- International excludes United States permanent residents

First Time, Full-Time First Year Students (Fall) – Residency and Citizenship

Year	Total Students	Residency		Citizenship		
		Res.	Non-Res.	U.S. Citizen	U.S. Perm. Resident	International
2000	476	442	34	459	2	15
2001	518	502	16	499	5	14
2002	462	448	14	445	5	12
2003	496	477	19	476	4	16
2004	536	512	24	527	0	9
2005	508	489	19	499	0	9
2006	529	510	19	521	2	6
2007	487	474	13	482	1	4
2008	509	495	14	502	0	7
2009	547	531	16	526	5	16
2010	491	475	16	467	5	19
2011	511	486	25	496	1	14

- Data source: Registration and Records
- Excludes CCEDL data

SAT & High School Rank for First Time, Full-Time First Year Students (Fall)

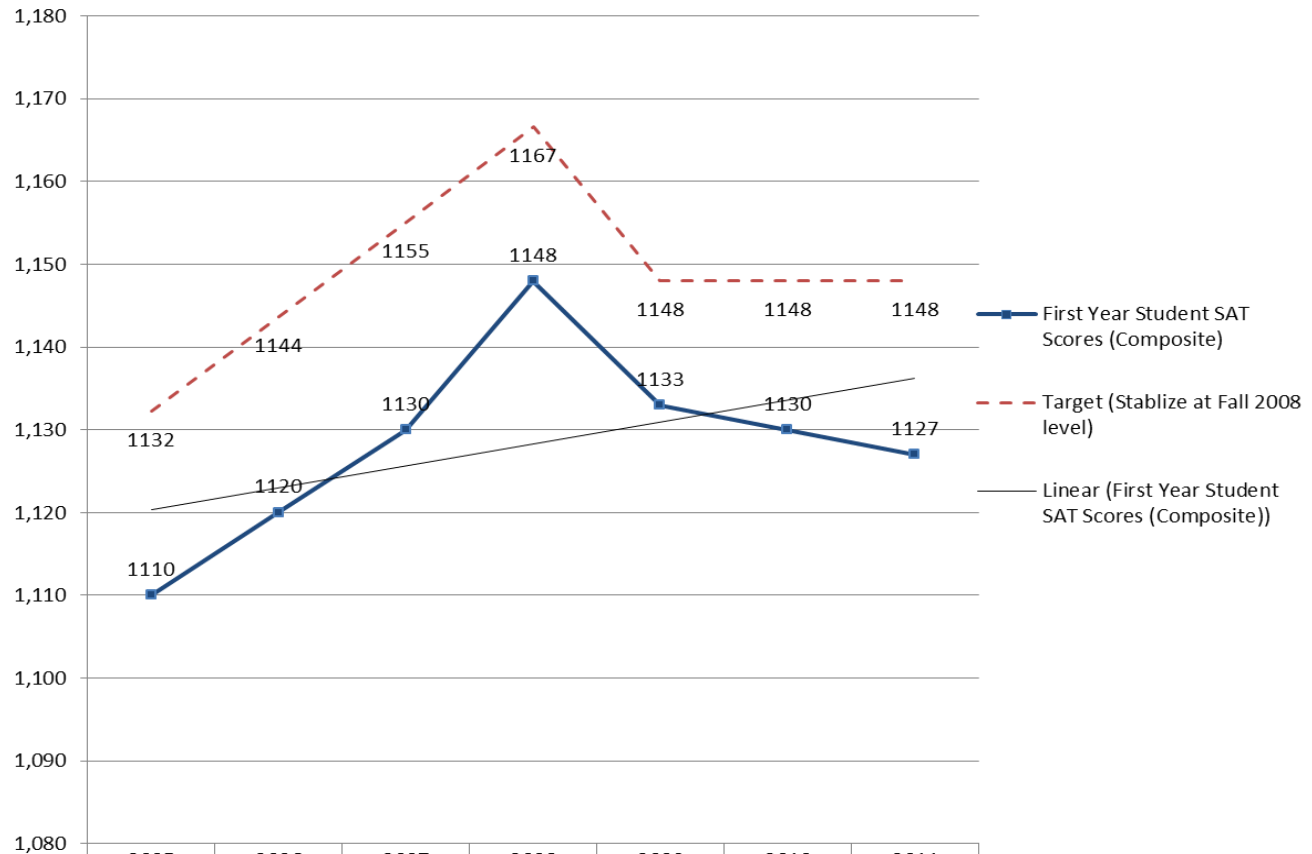
Year	Size of Class	SAT Scores*				High School Percentile (Median)
		Critical Reading**		Math		
		Mean	Median	Mean	Median	
2000	476	556	560	558	550	81
2001	520	556	560	557	560	81
2002	462	549	550	559	560	81
2003	496	555	550	561	560	80.5
2004	536	564	560	571	570	81
2005	508	553	560	561	550	81
2006	529	554	550	560	560	81
2007	487	555	550	561	560	83
2008	509	557	560	567	570	83
2009	547	552	550	566	560	81
2010	491	547	540	558	560	83
2011	511	551	550	566	570	83

**Formerly Verbal

Note: Students in the top 10% of their class (or, if their school does not rank, students with a 3.5 GPA or better) do not need to submit standardized test scores.

- Data source: Registration and Records
- Excludes CCEDL & Graduate Student Data
- Data reflects Cohort (not June 1st numbers)

First Year Student Composite SAT Scores
First Year Student Composite SAT Scores



	2005	2006	2007	2008	2009	2010	2011
First Year Student SAT Scores (Composite)	1110	1120	1130	1148	1133	1130	1127
Target (Stablize at Fall 2008 level)	1132	1144	1155	1167	1148	1148	1148

- Data source: Admissions Office
- Data reflects June 1st Admission numbers
- Includes CCEDL data

All Enrolled Students

All Enrolled Students

Semester/ Year	Total Enrolled	Total Full-Time	Total Part-Time	FTE of Part- Time	Total FTE	Gender (FT)		Gender (PT)	
						Male	Female	Male	Female
Spring 2002	1801	1642	159	51.7	1693.7	611	1031	67	92
Fall 2002	1901	1736	165	60.3	1796.3	623	1113	57	108
Spring 2003	1828	1676	152	58.1	1734.1	592	1084	53	99
Fall 2003	1988	1778	210	83.5	1861.5	617	1161	74	136
Spring 2004	1950	1719	231	98.1	1817.1	593	1126	79	152
Fall 2004	2125	1871	254	107.3	1978.3	640	1231	92	162
Spring 2005	2085	1807	278	125.9	1932.9	628	1179	96	182
Fall 2005	2206	1895	311	136.8	2031.8	644	1251	110	201
Spring 2006	2161	1851	310	142.3	1993.3	633	1218	111	199
Fall 2006	2330	1991	339	152.1	2143.1	696	1295	131	208
Spring 2007	2278	1886	392	187.3	2073.3	652	1234	160	232
Fall 2007	2360	1947	413	198.5	2145.5	671	1276	152	261
Spring 2008	2263	1856	407	198.4	2054.4	633	1223	154	253
Fall 2008	2311	1895	416	196.7	2091.7	644	1251	149	267
Spring 2009	2284	1832	452	201.8	2033.8	623	1209	163	289
Fall 2009	2367	1919	448	195.3	2114.3	686	1233	163	285
Spring 2010	2332	1871	461	209.4	2080.4	673	1198	166	295
Fall 2010	2416	1892	524	236.8	2128.8	686	1206	193	331
Spring 2011	2346	1829	517	243.7	2072.7	664	1165	191	326
Fall 2011	2389	1879	510	228	2107	655	1224	196	314

- Data source: Registration and Records
- Includes CCEDL and Graduate student data

All Full-Time Students (Fall) by Ethnic Classification

Year	Total Students	CCEDL UG Students (full-time only)	Graduate & Post Graduate Students	Ethnic Classification								
				White	Black or African American	Hispanic	Asian	American Indian or Alaska Native	Native Hawaiian or Other Pacific Islanders	Two or More Races	Race and Ethnicity Unknown	International
2000	1633	*	*	1521	25	40	46	1	*	*	*	*
2001	1726	*	*	1611	28	44	39	4	*	*	*	*
2002	1736	*	*	1611	35	42	44	4	*	*	*	*
2003	1778	*	*	1653	31	38	51	5	*	*	*	*
2004	1871	*	*	1752	27	33	55	4	*	*	*	*
2005	1895	*	*	1761	31	35	57	2	*	*	*	*
2006	1991	*	*	1857	29	33	64	3	*	*	*	*
2007	1947	*	*	1806	35	40	60	4	*	*	*	*
2008	1895	15	42	1747	38	41	63	5	*	*	*	*
2009	1919	20	33	1750	44	49	62	8	2	2	2	*
2010	1892	21	28	1685	47	43	36	8	2	7	1	63
2011	1879	31	33	1675	46	39	41	6	3	11	1	57

* Undetermined

- Data source: Registration and Records
- Includes full-time CCEDL and Graduate student data
- International excludes United States permanent residents

All Full-Time Students (Fall) by Housing Status (by Gender)

Year	Total FT Students	Full-time Traditional Undergraduate Students	FT CCEDL UG Students	FT Graduate & Post Graduate Students	Housing Status			
					On-Campus Students	Gender of On-Campus Students		Off-Campus Students
						Male	Female	
2000	1633	*	*	*	1366	473	893	267
2001	1726	*	*	*	1455	534	921	271
2002	1736	*	*	*	1461	517	944	275
2003	1778	*	*	*	1492	511	981	286
2004	1871	*	*	*	1535	508	1027	336
2005	1895	*	*	*	1525	493	1032	370
2006	1991	*	*	*	1593	502	1091	398
2007	1947	*	*	*	1556	499	1057	391
2008	1895	1838	15	42	1532	510	1022	363
2009	1919	1866	20	33	1574	549	1025	345
2010	1892	1843	21	28	1612	564	1048	280
2011	1879	1854	31	25	1591	537	1054	288

* Undetermined

- Data source: Registration and Records
- Includes CCEDL and Graduate student data
- Includes study abroad students as residents
- Post Graduate Students are individuals that have already earned a Baccalaureate degree and are taking additional courses.

Full-Time International Students (Fall)

Year	All Full-time Students				Incoming Freshman Cohort				Incoming One-Year Non-Degree International Students	Incoming Transfer Students			
	Total Students	U.S. Citizens	U.S. Perm. Residents	Internationals	Total Students	U.S. Citizens	U.S. Perm. Residents	Internationals		Total Students	U.S. Citizens	U.S. Perm. Residents	Internationals
2000	1633	1563	6	64	476	459	2	15					
2001	1726	1637	10	79	518	499	5	14	12				
2002	1736	1642	13	81	462	445	5	12	12	44	38	0	6
2003	1778	1685	14	79	496	476	4	16	10	35	32	0	3
2004	1871	1787	14	70	536	527	0	9	13	41	36	1	4
2005	1895	1825	10	60	508	499	1	8	15	41	39	0	2
2006	1991	1925	8	58	529	521	2	6	19	29	29	0	0
2007	1947	1884	11	52	487	482	1	4	20	18	18	0	0
2008	1895	1847	12	36	509	500	3	6	10	30	28	2	0
2009	1919	1854	16	46	547	526	5	16	10	23	23	0	0
2010	1892	1814	16	63	491	467	5	19	10	25	24	0	1
2011	1879	1806	16	57	511	494	3	14	7	20	19	0	1

- Data source: Registration and Records
- Includes CCEDL and Graduate student data

Full-Time Students (Fall) by Home State

State	2005		2006		2007		2008		2009		2010		2011	
	#	%	#	%	#	%	#	%	#	%	#	%	#	%
Connecticut	28	1.5	29	1.5	31	1.6	33	1.7	25	1.3	15	0.8	16	0.9
Delaware	39	2.1	51	2.6	47	2.4	49	2.6	55	2.9	56	3.0	46	2.4
Maryland	138	7.3	157	7.9	164	8.4	181	9.6	189	9.8	186	9.8	184	9.8
Massachusetts	12	0.6	17	0.9	21	1.1	20	1.1	20	1.0	15	0.8	10	0.5
New Jersey	223	11.8	241	12.1	223	11.4	224	11.8	235	12.2	251	13.3	240	12.8
New York	48	2.5	49	2.5	55	2.8	59	3.1	52	2.7	52	2.7	52	2.8
Ohio	10	0.5	10	0.5	8	0.4	7	0.3	5	0.3	3	0.2	2	0.1
Pennsylvania	1283	67.7	1314	66	1288	66.0	1231	65.0	1228	64.0	1189	62.8	1218	64.8
Virginia	10	0.5	11	0.6	11	0.6	9	0.5	12	0.6	7	0.4	5	0.3
Northern New England ¹	9	0.5	15	0.7	19	1.0	23	1.2	21	1.1	22	1.2	17	0.9
Other States + D.C. ²	19	1.3	3	0.1	4	0.2	2	0.1	2	0.1	1	0.1	1	0.1
Mid-Western States ³	6	0.4	6	0.3	5	0.3	3	0.2	4	0.2	6	0.3	5	0.3
Southern States*	7	0.4	17	0.8	15	0.8	16	0.8	14	0.7	16	0.8	16	0.9
South-West States**	N/A		6	0.3	3	0.2	1	0.1	6	0.3	4	0.2	5	0.3
North-West States***	N/A		4	0.2	1	0.1	1	0.1	4	0.2	6	0.3	5	0.3
International Students	61	3.2	59	3	52	2.7	36	1.9	46	2.4	63	3.3	57	3.0

¹Maine, Vermont, New Hampshire, Rhode Island. Note: Massachusetts and Connecticut are listed separately.

²Alaska, Hawaii, Serving with the Armed Forces in Europe

³Illinois, Indiana, Michigan, Wisconsin.

* Alabama, Arkansas, Florida, Georgia, Kentucky, Louisiana, Mississippi, North Carolina, Oklahoma, South Carolina, Tennessee, West Virginia

**Arizona, California, Colorado, Nevada, New Mexico, Utah, Texas

***Idaho, Iowa, Kansas, Minnesota, Missouri, Montana, Nebraska, North Dakota, Oregon, South Dakota, Washington, Wyoming

- Data source: Registration and Records
- Includes CCEDL and Graduate student data

Full-Time Students (Fall) by Religious Affiliation

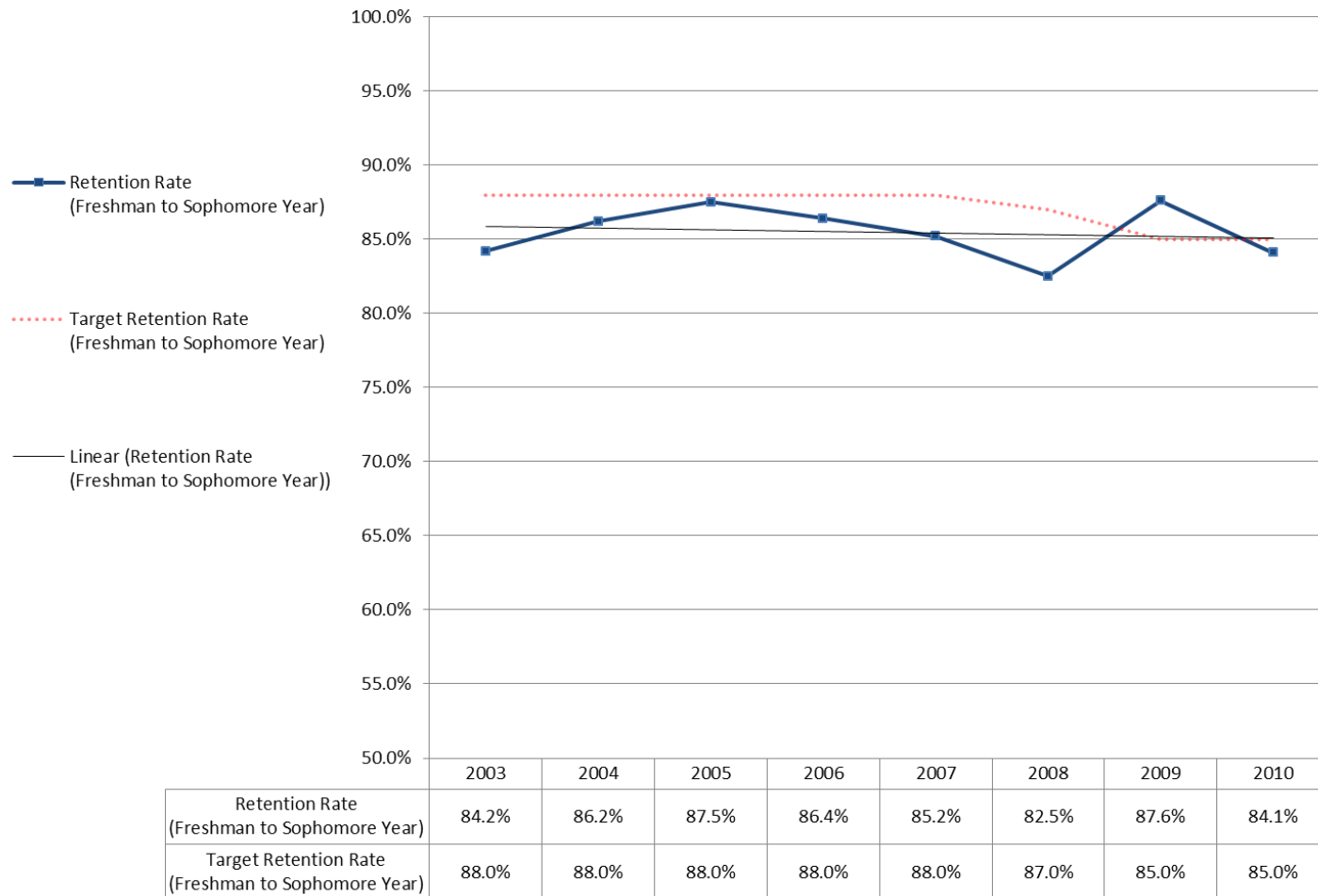
Affiliation	2005-06		2006-07		2007-08		2008-09		2009-10		2010-11		2011-12	
	#	%	#	%	#	%	#	%	#	%	#	%	#	%
Assembly of God	4	0.2	4	0.2	9	0.5	12	0.6	14	0.7	15	0.8	13	0.5
Baptist	33	1.7	40	2	39	2	39	2.1	53	2.8	50	2.6	55	2.3
Brethren in Christ	4	0.2	4	0.2	7	0.4	8	0.4	11	0.6	10	0.5	9	0.4
Buddhism	2	0.1	3	0.2	2	0.1	2	0.1	4	0.2	4	0.2	8	0.3
Church of the Brethren	54	2.9	46	2.3	38	2	29	1.5	32	1.7	31	1.3	37	1.5
Church of God	5	0.3	7	0.4	5	0.3	7	0.4	9	0.5	26	1.4	7	0.3
Episcopal	28	1.5	27	1.4	27	1.4	23	1.2	28	1.5	27	1.4	22	0.9
Evangelical Congregational	9	0.5	7	0.4	6	0.3	7	0.4	7	0.4	15	0.8	13	0.5
Hinduism	6	0.3	5	0.3	3	0.2	2	0.1	1	0.1	2	0.1	2	0.1
Independent	0	0	0	0	1	0.1	2	0.1	7	0.4	10	0.5	14	0.6
Islam	3	0.2	1	0.1	3	0.2	6	0.3	5	0.3	8	0.4	6	0.3
Judaism	16	0.8	16	0.8	14	0.7	14	0.7	16	0.8	22	1.2	30	1.3
Lutheran	125	6.6	124	6.3	119	6.1	122	6.5	122	6.4	112	5.9	125	5.2
Mennonite	16	0.8	13	0.7	15	0.8	12	0.6	12	0.6	18	1	18	0.8
Orthodox	15	0.8	14	0.7	10	0.5	9	0.5	9	0.5	2	0.1	5	0.2
Presbyterian	78	4.1	86	4.3	82	4.2	77	4.1	79	4.1	83	4.4	95	4
Protestant	35	1.8	30	1.5	26	1.3	31	1.6	70	3.6	71	3.8	75	3.1
Quaker	3	0.2	4	0.2	2	0.1	2	0.1	1	0.1	1	0.1	3	0.1
Roman Catholic	435	23	458	23	485	25	484	25.7	509	26.5	475	25.1	482	20.2
United Church of Christ	39	2.1	35	1.8	34	1.8	37	2	36	1.9	36	1.9	34	1.4
United Methodist	147	7.8	153	7.7	149	7.7	152	8.1	160	8.3	142	7.5	163	6.8
No Preference	98	5.2	129	6.5	122	6.3	127	6.7	138	7.2	110	5.8	125	5.2
No Response	683	36.1	725	36.4	692	35.5	615	32.7	556	29	608	32.1	1009	42.2
Other	20	1.2	60	3	57	2.9	64	3.4	40	2.1	37	2	38	1.6

- Data source: Registration and Records
- Includes CCEDL and Graduate student data

Retention and Graduation

Freshman-to-Sophomore Retention Rates by Year

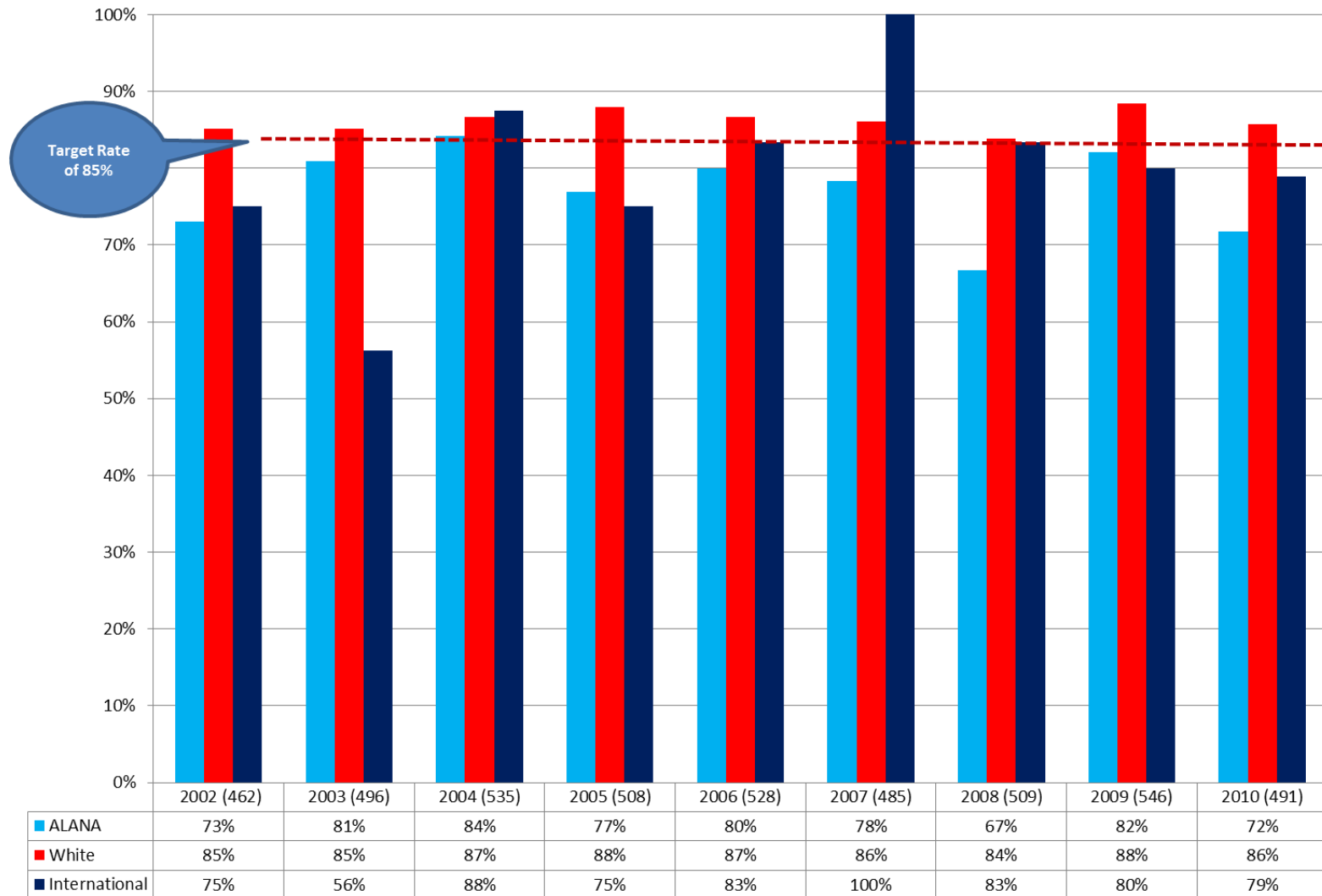
Cohort Freshman-to-Sophomore Retention Rate



- Data source: Registration and Records
- Excludes CCEDL and Graduate student data

Retention Rates (Freshman-to-Sophomore) by Cohort (by Ethnicity/Citizenship)

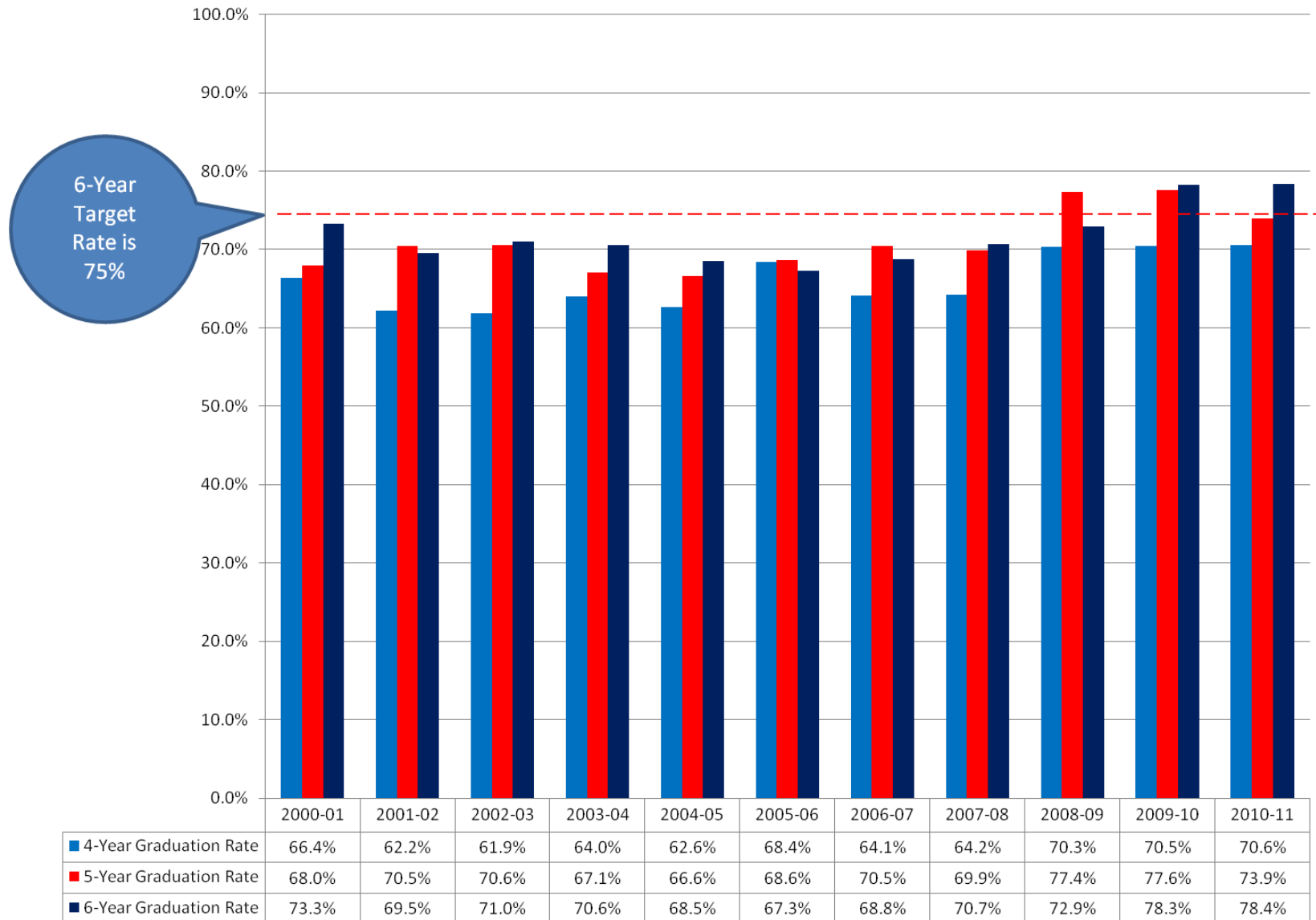
**Retention Rates (Freshman to Sophomore) by Cohort
(by Ethnicity/Citizenship)**



- Data source: Registration and Records
- Excludes CCEDL and Graduate student data
- Enrolled at fall 4-week point their second year

4, 5 & 6-Year Graduation Rates by Academic Year

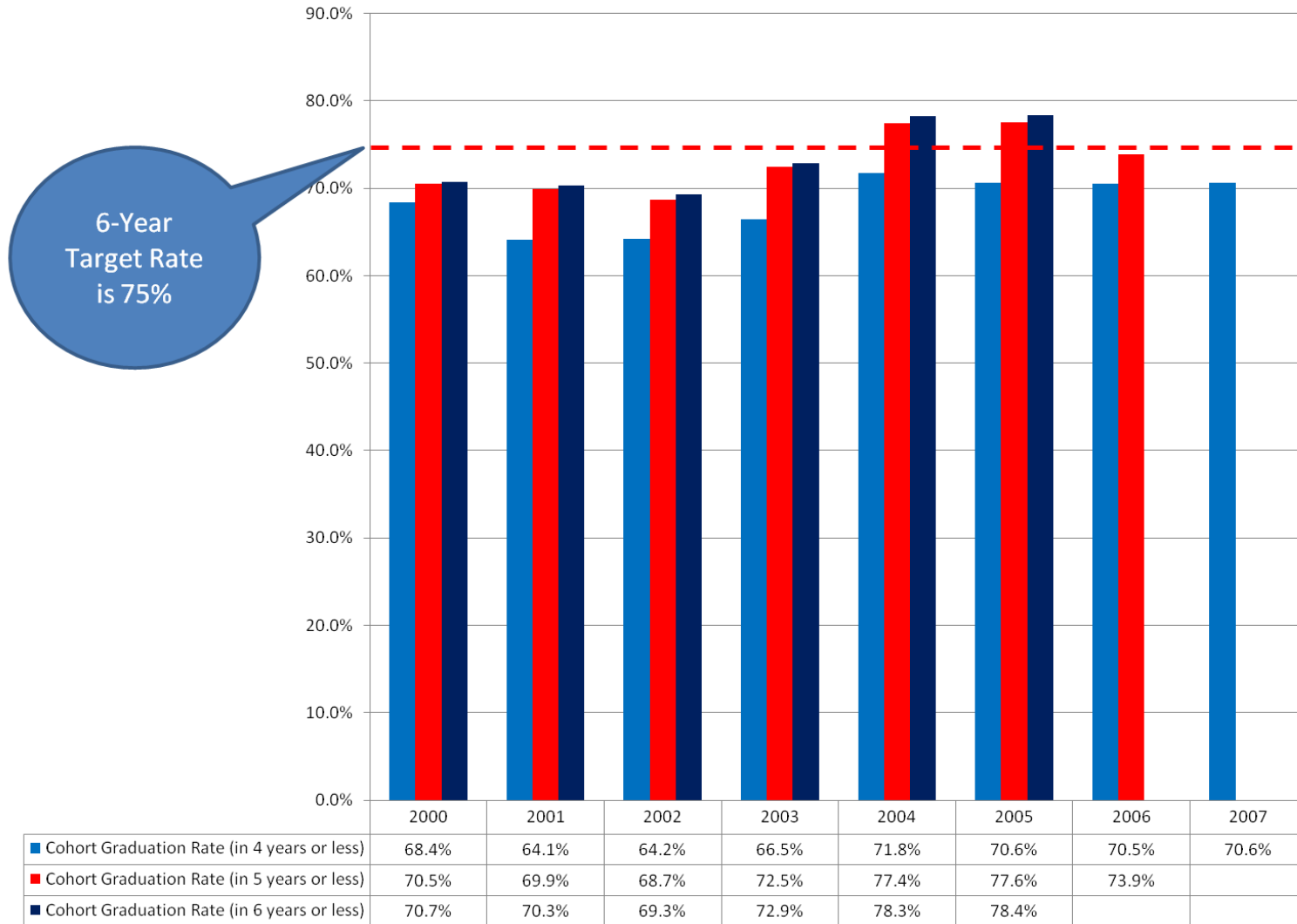
4, 5, & 6-Year Graduation Rates by Academic Year



- Data source: Registration and Records
- July 1st – June 30th

4, 5 & 6-Year Graduation Rates by Cohorts

4, 5, & 6-Year Graduation Rate by Cohort



- Data source: Registrations and Records
- Excludes CCEDL and Graduate student data
- July 1st – June 30th

Graduation Rates by Number of Years (4, 5 and 6)

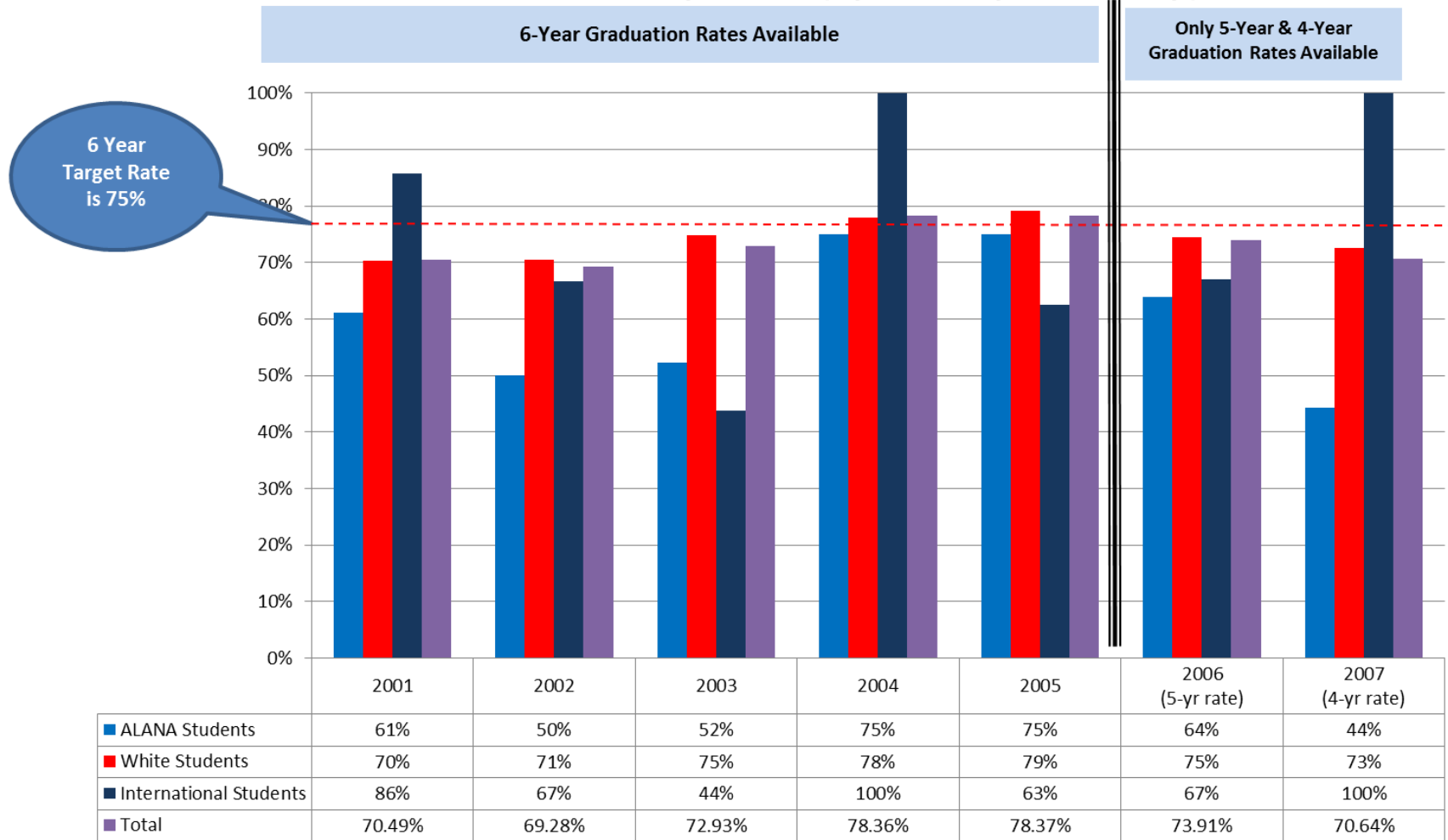
Students Entered in Fall	Completed or Graduated (as of August)		
	≤ Four Years	≤ Five Years	≤ Six Years
1989	58.5	62.6	63.6
1990	60.3	64.9	65.8
1991	58.9	67.0	67.5
1992	59.5	67.2	67.4
1993	65.3	72.9	73.3
1994	62.2	68.0	69.5
1995	66.4	70.5	71.0
1996	62.2	70.6	70.6
1997	61.9	67.1	68.5
1998	64.0	66.6	67.3
1999	62.6	68.6	68.8
2000	68.4	70.5	70.7
2001	64.1	69.9	70.3
2002	64.2	68.7	69.3
2003	66.5	72.5	72.9
2004	71.8	77.4	78.3
2005	70.6	77.6	78.4
2006	70.5	73.9	
2007	70.6		

* Cohort adjusted to reflect students removed as per IPEDS guidelines

- Data source: Registration and Records
- July 1st – June 30th

6-Year Graduation Rates by Cohorts (by Ethnicity/Citizenship)

6-Year Graduation Rates by Cohort (by Ethnicity/Citizenship)



- The chart represents a 6-year graduation rate with the exception of the last two columns. These cohorts represent the 5 and 4-year graduation rates, respectively.
- Data source: Registration and Records
- Excludes CCEDL and Graduate student data
- July 1st – June 30th

Completions (1st Major Only) by Degree/Year/Gender

Year	M.S.		B.A.		B.S.		B.P.S./B.L.S.		B.MUS.		A.S./A.A.		Total
	Male	Female	Male	Female	Male	Female	Male	Female	Male	Female	Male	Female	
Aug '03			6	5	8	28	0	0			0	0	47
Jan '04			3	5	15	23	0	1			1	0	48
May '04			33	101	78	140	3	1			0	1	<u>357</u>
2003-04													452
Aug '04			8	6	9	17	2	0			0	1	43
Jan '05			4	11	11	16	2	1	0	2	0	2	49
May '05			41	81	78	143	2	4	2	2	3	5	<u>361</u>
2004-05													453
Aug '05	0	17	5	6	16	9	0	0	0	0	0	0	53
Jan '06	0	6	8	7	10	21	3	4	0	1	0	2	62
May '06	0	0	31	81	58	146	1	1	1	4	4	3	<u>330</u>
2005-06													445
Aug '06	1	27	3	7	11	15	0	1	0	4	0	1	70
Jan '07	0	1	9	12	10	23	3	4	0	2	0	3	67
May '07	0	0	36	101	82	153	2	1	1	2	2	5	<u>385</u>
2006-07													522
Aug '07	1	16	5	7	10	10	1	1	0	1	0	4	56
Jan '08	0	1	10	7	23	29	1	1	0	1	1	6	80
May '08	0	0	52	72	87	186	2	4	1	6	2	7	<u>419</u>
2007-08													555
Aug '08	0	26	6	10	8	19	2	0	0	2	3	4	80
Jan '09	0	1	10	13	15	23	1	1	0	2	6	5	77
May '09	0	0	48	95	83	187	0	2	0	3	2	5	<u>425</u>
2008-09													582
Aug '09	0	39	4	4	13	12	0	1	0	3	2	9	87
Jan '10	0	1	7	14	18	27	0	2	0	0	5	1	75
May '10	0	0	45	90	108	183	3	2	1	6	2	11	<u>451</u>
2009-10													613
Aug '10	0	29	4	11	10	9	0	0	0	0	2	5	70
Jan '11	0	1	4	15	16	27	1	0	1	0	6	6	77
May '11	0	0	37	106	103	153	1	0	1	4	5	8	<u>418</u>
2010-11													565

- Data source: Registration and Records
- Includes CCEDL and Graduate Student data
- Excludes 2nd and 3rd majors

Undergraduate Completions by Major

Department	Major	2006-07	2007-08	2008-09	2009-10	2010-11
Biology	Biology	24	26	38	33	19
	Biotechnology	5	3	3	6	4
	Environmental Science	1	5	4	5	3
	Biology Department Totals =	30	34	45	44	26
Business	Accounting	13	22	10	18	19
	Business Administration	65	62	61	84	59
	Economics	0	4	0	5	7
	International Business	14	20	22	20	21
	Business Department Totals =	92	108	93	127	106
Chemistry	Biochemistry	0	1	2	0	8
	Chemistry	1	3	2	4	2
	Chemistry Totals =	1	4	4	4	10
Communications	Communications	34	29	39	33	32
	Communications Totals =	34	29	39	33	32
Education	Elementary Education	37	46	57	43	9
	Elementary and Early Childhood Education	22	12	6	10	31
	Education Totals =	59	58	63	53	40
English	English	31	22	22	26	34
	English Totals =	31	22	22	26	34
Fine and Performing Arts	Fine Arts	3	5	3	3	5
	Music	2	1	4	4	2
	Music Education	1	5	3	5	5
	Music Therapy	8	4	4	5	1
	Theatre	5	6	7	6	8
	Fine Arts Totals =	19	21	21	23	21

- Data source: Registration and Records
- Excludes CCEDL data
- Excludes 2nd and 3rd majors

Undergraduate Completions by Major

<u>Department</u>	<u>Major</u>	<u>2006-07</u>	<u>2007-08</u>	<u>2008-09</u>	<u>2009-10</u>	<u>2010-11</u>
History	History	13	15	11	12	15
	History Totals =	13	15	11	12	15
Interdisciplinary	Political Philosophy & Legal Studies	1	1	2	2	0
	Social Studies Education	4	13	3	8	7
	Social Sciences Education	0	0	0	0	0
	General Sciences Education	0	0	0	1	0
	Citizenship Education	1	0	0	0	0
	Interdisciplinary Totals =	6	14	5	11	7
Mathematical and Computer Science	Actuarial Science	1	3	4	1	4
	Computer Science	7	5	6	2	1
	Information Systems	3	2	1	5	2
	Mathematics	9	20	13	8	12
	Mathematical and Computer Sci Totals =	20	30	24	16	19
	French	2	1	0	4	1
	German	1	0	1	1	1
	Japanese	1	0	1	3	7
	Spanish	3	2	3	3	13
	Modern Language Totals =	7	3	5	11	22
Occupational Therapy	Health and Occupation	29	43	31	31	26
	Occupational Therapy Totals =	29	43	31	31	26
Philosophy	Philosophy	4	4	4	5	2
	Philosophy Totals =	4	4	4	5	2

- Data source: Registration and Records
- Excludes CCEDL data
- Excludes 2nd and 3rd majors

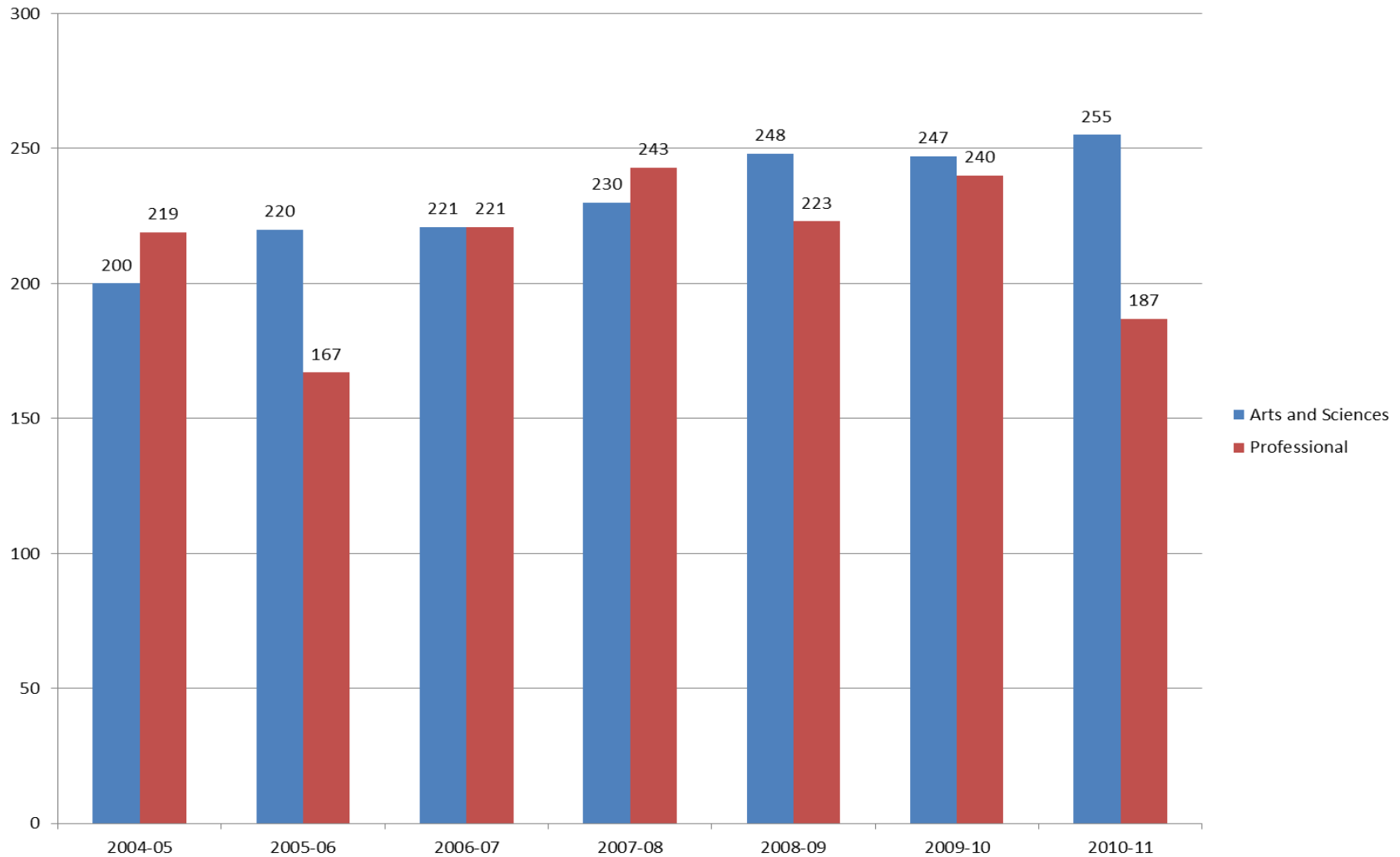
Undergraduate Completions by Major

Department	Major	<u>2006-07</u>	<u>2007-08</u>	<u>2008-09</u>	<u>2009-10</u>	<u>2010-11</u>
Physics and Engineering	Computer Engineering	4	8	3	6	4
	Engineering	4	6	3	3	5
	Industrial Engineering	0	1	5	1	1
	Physics	4	1	0	2	1
	Pre-Engineering	4	3	3	1	0
Physics and Engineering Totals =		16	19	14	13	11
Political Science	Political Science	19	16	15	17	12
	Physics and Engineering Totals =		19	16	15	17
Psychology	Psychology	16	16	26	25	30
	Psychology Totals =		16	16	26	25
Religious Studies	Religious Studies	7	10	6	4	5
	Religious Studies Totals =		7	10	6	4
Social Work	Social Work	21	15	18	17	11
	Social Work Totals =		21	15	18	17
Sociology and Anthropology	Criminal Justice	8	5	12	10	7
	Sociology and Anthropology	10	7	13	5	6
	Sociology and Anthropology Totals =		18	12	25	15

- Data source: Registration and Records
- Excludes CCEDL data
- Excludes 2nd and 3rd majors

Undergraduate Completions: Arts/Sciences versus Professional (Carnegie Classifications)

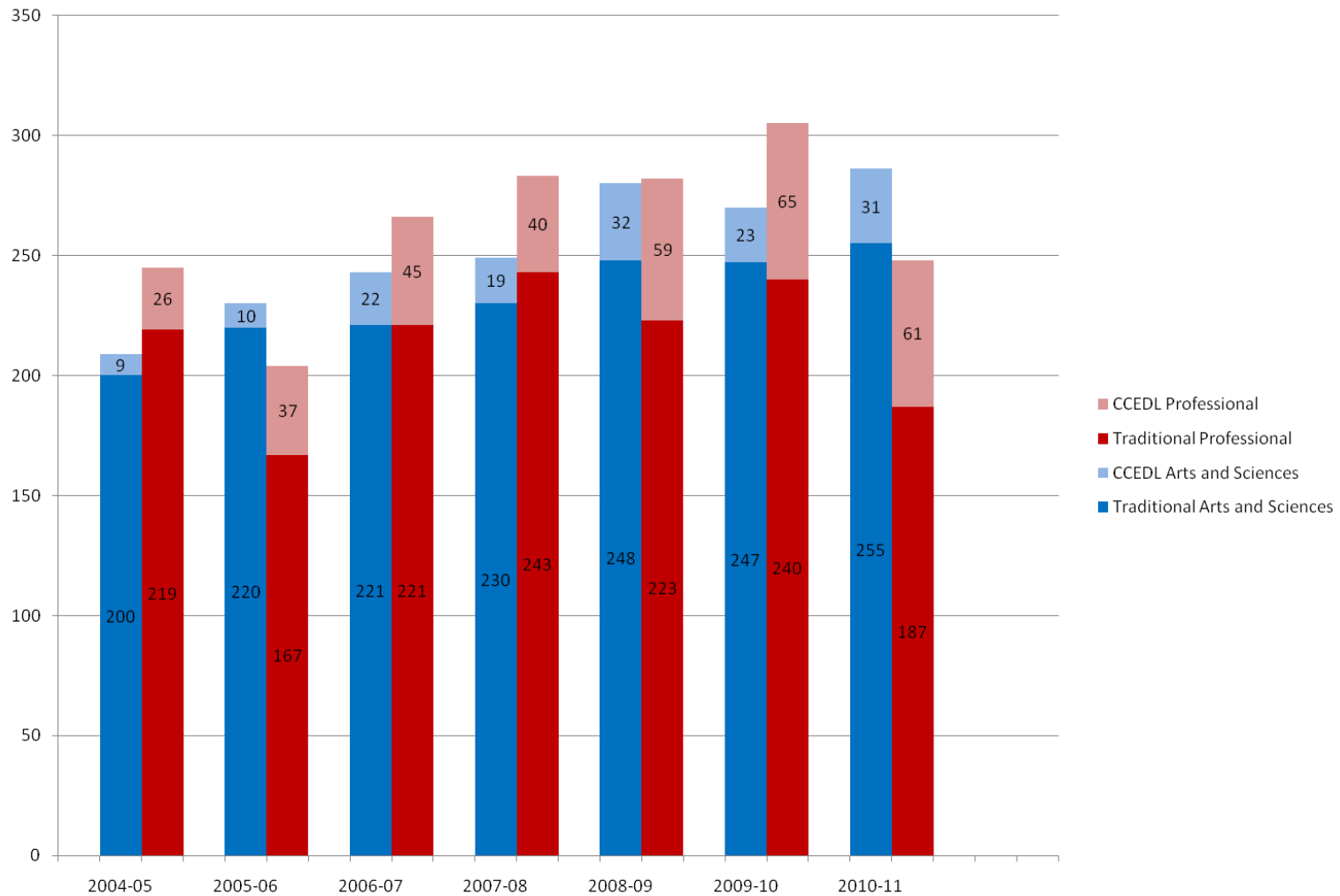
Traditional Undergraduate Completions: Arts/Sciences versus Professional (Carnegie Classifications)



- Data source: Registration and Records
- Excludes CCEDL and Graduate student data
- Includes First Major and Second Major (July 1st – June 30th)

CCEDL & Traditional Undergraduate Completions: Arts/Sciences versus Professional (Carnegie Classifications)

CCEDL & Traditional Undergraduate Completions: Arts/Sciences versus Professional (Carnegie Classifications)



- Data source: Registration and Records
- Excludes Graduate student data
- Includes First Major and Second Major (July 1st – June 30th)

Academics

Declared Majors (with required areas of interest) -Traditional Only

Declared Majors – Traditional Only
(Data Source = Fall 4-week Data)

<u>Department</u>	<u>Major</u>	<u>2008-09</u>	<u>2009-10</u>	<u>2010-11</u>	<u>2011-12</u>
Biology					
	Biology	37	49	50	48
	Biology - Allied Health	26	26	28	34
	Biology - Premedicine	29	21	17	32
	Biology Education	2	1	2	5
	BioTechnology	15	17	16	14
	Environmental Science	15	13	11	14
Business					
	Accounting	38	56	51	46
	Business Administration	102	90	74	63
	Business Administration - Accounting	4	5	3	7
	Business Administration - Business Information Systems	1	3	2	1
	Business Administration- Economics	3	2	4	0
	Business Administration - Entrepreneurship	9	8	8	8
	Business Administration - Finance	23	16	15	12

**Declared Majors – Traditional Only
(Data Source = Fall 4-week Data)**

<u>Department</u>	<u>Major</u>	<u>2008-09</u>	<u>2009-10</u>	<u>2010-11</u>	<u>2011-12</u>
Business cont'd.					
	Business Administration - Management	21	20	18	12
	Business Administration - Marketing	33	42	39	24
	Economics	2	6	10	10
	International Business	39	36	33	27
	International Business - Accounting	3	1	2	1
	International Business- Business Information Systems	2	2	0	*
	International Business - Economics	*	*	*	1
	International Business - Finance	2	5	8	3
	International Business - Management	1	4	6	3
	International Business - Marketing	7	5	4	5
Chemistry					
	Biochemistry	8	10	18	15
	Chemistry	10	13	13	17
	Chemistry Education	1	3	2	3
	Chemistry-Forensic Science	0	0	1	0

* Data Not Available

**Declared Majors – Traditional Only
(Data Source = Fall 4-week Data)**

<u>Department</u>	<u>Major</u>	<u>2008-09</u>	<u>2009-10</u>	<u>2010-11</u>	<u>2011-12</u>
Communications					
	Communications	44	39	83	84
	Corporate Communications	18	27	*	*
	Communications-Corporate Media	2	1	*	*
	Communications-Cult. Studies	1	3	*	*
	Communications-Mass Communications	13	9	*	*
	Communications-Marketing	10	1	*	*
	Communications-New Media	1	3	*	*
	Public Relations	11	2	*	*
Computer Science					
	Computer Science	8	13	17	23
	Information Systems	5		7	10
Education					
	Early Childhood Education	*	9	46	77
	Elem/Middle Education - Language & Reading	*	0	3	7
	Elem/Middle Education - Math	*	0	6	15

* Data Not Available

**Declared Majors – Traditional Only
(Data Source = Fall 4-week Data)**

<u>Department</u>	<u>Major</u>	<u>2008-09</u>	<u>2009-10</u>	<u>2010-11</u>	<u>2011-12</u>
Education cont'd.					
	Elem/Middle Education - Science	*	0	1	4
	Elem/Middle Education - Social Studies	*	0	1	2
	Elementary Ed- Early Childhood	10	9	17	9
	Elementary Ed - Special Education	48	21	31	7
	Elementary Ed- Behavior Management	6	3	*	*
	Elementary Ed-Special Needs	2	1	*	*
	Elementary Education	95	100	21	13
English					
	English - Literature	16	16	17	12
	English - Professional Writing	34	38	38	28
	English Education	14	17	18	14
Fine & Performing Arts					
	Art	0	7	1	1
	Fine Arts	9	9	17	14
	Fine Arts - Studio Art	1	0	1	1
	Music	4	4	9	11
	Music Education	17	22	23	17
	Music Therapy	19	19	21	20
	Theatre	16	16	18	8

* Data Not Available

**Declared Majors – Traditional Only
(Data Source = Fall 4-week Data)**

<u>Department</u>	<u>Major</u>	<u>2008-09</u>	<u>2009-10</u>	<u>2010-11</u>	<u>2011-12</u>
History					
	History	26	27	20	17
Interdisciplinary					
	General Science-Certification	0	1	0	0
	Political Philosophy & Legal Studies	3	1	2	3
	Social Studies Education	24	25	25	17
Mathematical and Computer Sciences					
	Actuarial Science	17	19	20	12
	Mathematics	7	7	15	16
	Mathematics - Education	19	14	13	13
	Mathematics-Applied Mathematics	3	1	0	0
	Mathematics-Pure Mathematics	1	0	0	0
Modern Languages					
	Modern Languages-French	3	3	2	0
	Modern Languages-German	2	2	2	0
	Modern Languages - Japanese	11	18	24	31
	Modern Languages - Spanish	7	9	5	1
	Spanish Education			1	2

* Data Not Available

**Declared Majors – Traditional Only
(Data Source = Fall 4-week Data)**

<u>Department</u>	<u>Major</u>	<u>2008-09</u>	<u>2009-10</u>	<u>2010-11</u>	<u>2011-12</u>
Occupational Therapy					
	Health & Occupation	93	84	108	117
Philosophy					
	Philosophy	4	4	3	6
	Philosophy-Humanities	0	1	1	0
	Philosophy- Professional Ethics	0	1	2	0
Physics and Engineering					
	Computer Engineering	13	13	11	10
	Industrial Engineering Management	7	3	5	13
	Industrial Engineering	0	1	0	0
	Physics	5	4	4	3
	Physics Education	0	0	1	3
	Engineering 3+2	3	2	0	0
Political Science					
	Political Science	40	35	30	30
Psychology					
	Psychology	61	3	63	63
Religious Studies					
	Religious Studies	2	3	10	14
	Religious Studies- Ethics and Society	0	2	0	0
	Religious Studies- History of Christianity	0	1	0	0
	Religious Studies- Ministry Studies	4	1	0	0

* Data Not Available

**Declared Majors – Traditional Only
(Data Source = Fall 4-week Data)**

<u>Department</u>	<u>Major</u>	<u>2008-09</u>	<u>2009-10</u>	<u>2010-11</u>	<u>2011-12</u>
Social Work					
	Social Work	45	39	36	49
Sociology & Anthropology					
	Criminal Justice	20	18	22	23
	Sociology- Anthropology	17	15	19	23
	Social Sciences Education	1	0	0	0
Other					
	Certification Only	0	0	0	1
	Engineering	13	27	11	38
	Freshman Student	510	547	490	513
	Not in degree	14	14	14	11
	Transfer	0	2	2	6
	Undecided/Undeclared	26	18	22	22

* Data Not Available

Declared Minors – Traditional Only

Declared Minors – Traditional Only
(Data Source = Fall 4-week Data)

<u>Department</u>	<u>Minor</u>	<u>2008-09</u>	<u>2009-10</u>	<u>2010-11</u>	<u>2011-12</u>
Biology					
	Biology	8	11	9	10
Business					
	Accounting	1	0	1	0
	Business Administration	39	47	31	37
	Economics	0	14	7	4
	International Studies	1	3	3	5
Chemistry and Biochemistry					
	Biochemistry	4	4	1	2
	Chemistry	1	2	0	1
Communications					
	Communications	18	17	12	12
	Mass Communications	1	0	0	0
Computer Science					
	Computer Science	4	5	5	6
	Information Systems	4	7	4	1
English					
	English	1	1	0	0
	English-Literature	17	7	1	1
	English-Professional Writing	12	22	10	10

* Data Not Available

Declared Minors – Traditional Only
 (Data Source = Fall 4-week Data)

<u>Department</u>	<u>Minor</u>	<u>2008-09</u>	<u>2009-10</u>	<u>2010-11</u>	<u>2011-12</u>
Fine and Performing Arts					
	Art	0	0	0	1
	Art History	2	5	2	0
	Fine Arts-History	3	0	2	4
	Fine Arts-Studio Art	6	0	13	18
	Music	7	6	5	5
	Studio Art	4	13	4	1
	Theatre	8	10	4	7
History					
	History	12	22	10	10
Interdisciplinary Programs					
	Anabaptist and Pietist Studies	0	1	1	0
	Asian Studies	8	14	10	13
	Creative Writing	4	13	16	12
	General Science	1	1	1	1
	International Studies	1	3	3	5
	Peace and Conflict Studies	4	3	3	5
	Women and Gender Studies	1	3	5	3
Mathematical Sciences					
	Mathematics	6	12	13	16
Modern Languages					
	French	*	25	15	7
	German	*	10	6	6
	Japanese	6	5	4	8
	Spanish	46	64	50	40

* Data Not Available

Declared Minors – Traditional Only
 (Data Source = Fall 4-week Data)

<u>Department</u>	<u>Minor</u>	<u>2008-09</u>	<u>2009-10</u>	<u>2010-11</u>	<u>2011-12</u>
Philosophy					
	Philosophy	6	5	2	2
Physics and Engineering					
	Physics	1	2	1	1
Political Science					
	Political Science	8	18	13	12
Psychology					
	Child Psychology	29	28	0	0
	Cognitive Neuroscience	8	6	6	8
	General Theory and Methods	10	38	27	45
	Psychology	7	0	0	0
Religious Studies					
	Religious Studies	10	13	10	8
Social Work					
	Human Services	31	30	17	19
Sociology/Anthropology					
	Anthropology	10	17	18	14
	Sociology	15	24	11	9

* Data Not Available

Grade Distribution and Mean G.P.A. by Semester

Year	A	A-	B+	B	B-	C+	C	C-	D+ / D / D-	F / WF / NP	P	W	I / AUD	Mean G.P.A.
2002-03														
Fall Sem.	23.5	15.7	12.1	13.4	6.8	4.3	4.5	2.2	2.8	1.6	11.7	1.5	0.0	3.18
Spr. Sem.	24.9	15.3	12.6	13.0	6.2	3.9	4.5	1.8	2.8	1.4	12.5	1.1	0.1	3.22
2003-04														
Fall Sem.	25.3	14.6	11.4	11.8	6.8	3.8	4.2	2.2	2.5	1.3	14.1	1.9	0.0	3.22
Spr. Sem.	26.7	16.3	12.3	12.2	6.3	3.7	4.4	2.0	2.2	1.3	10.8	1.7	0.1	3.26
2004-05														
Fall Sem.	25.7	15.3	11.8	11.9	6.7	3.9	3.7	2.2	2.3	1.1	13.8	1.6	0	3.25
Spr. Sem.	29.3	15.5	11.9	12.3	6.7	3.9	4.2	1.8	2.1	1.1	9	2.2	0.1	3.28
2005-06														
Fall Sem.	28.1	15.4	12.2	11.7	6.1	3.5	3.9	1.8	2.4	1.3	11.8	1.7	0.1	3.28
Spr. Sem.	31.9	15.6	11.7	12.5	6.2	3.4	4	1.9	2	1.1	8	1.7	0	3.32
2006-07														
Fall Sem.	27.4	14.7	11.2	11.7	6.4	3.9	4.4	2	2.5	1.8	12	2	0	3.23
Spr. Sem.	30.7	16	11.2	11.8	6.5	3.9	4	2.1	2.4	1.3	8.7	1.3	0.1	3.28
2007-08														
Fall Sem.	28	15.7	12.2	11.3	6.1	4.2	3.9	1.9	2.4	1	11.6	1.6	0	3.27
Spr. Sem.	29.9	16.9	12.1	12.5	7	4.2	3.3	1.9	2	0.6	8.2	1.2	1.2	3.32
2008-09														
Fall Sem.	25.5	16.2	12.2	12.0	7.1	4.4	3.8	2.2	2.7	1.1	10.8	1.7	0.3	3.24
Spr. Sem.	28.7	15.9	11.2	11.3	6.1	3.6	3.3	1.6	1.9	0.9	6.5	1.8	7.1	3.32
2009-10														
Fall Sem.	24.2	15.0	12.5	12.9	7.4	4.8	4.5	2.0	2.2	0.8	11.7	2.0	0.1	3.22
Spr. Sem.	28.5	16.2	12.0	12.8	6.9	4.1	3.6	2.1	2.4	0.9	8.9	1.6	0.0	3.28
2010-11														
Fall Sem.	24.1	16.4	12.3	12.6	7.1	4.2	4.2	2.0	2.7	1.1	11.3	2.0	0.0	3.22
Spr. Sem.	27.6	16.9	12.2	12.5	6.2	3.9	3.8	2.1	2.5	1.0	9.4	1.9	0.0	3.27

- Data source: Registration and Records
- Excludes CCEDL data

Department Mean G.P.A. by Semester

Department	2003-04		2004-05		2005-06		2006-07		2007-08		2008-09		2009-10		2010-11	
	Fall	Spr.	Fall	Spr.	Fall	Spr.	Fall	Spr.	Fall	Spr.	Fall	Spr.	Fall	Spr.	Fall	Spr.
Biology	2.73	3.05	2.81	3.12	2.81	3.07	2.8	3.11	2.75	3.08	2.87	3.16	2.92	3.08	2.83	2.94
Business Administration/ Accounting	3.14	3.2	3.07	3.17	3.06	3.14	2.93	2.97	3.10	3.1	3.07	3.07	2.94	3.07	3.01	3.05
Chemistry/Biochemistry	2.92	2.75	2.91	2.98	2.81	3.08	2.75	2.91	2.63	2.79	2.62	2.8	2.74	2.83	2.77	2.75
Communications	3.19	3.15	3.19	3.16	3.28	3.25	3.37	3.27	3.34	3.51	3.35	3.4	3.44	3.4	3.37	3.4
Education	3.72	3.77	3.71	3.67	3.78	3.77	3.79	3.76	3.78	3.76	3.75	3.71	3.76	3.78	3.58	3.65
English	3.28	3.21	3.29	3.24	3.33	3.29	3.23	3.36	3.29	3.31	3.26	3.39	3.22	3.3	3.29	3.28
F&PA	3.47	3.44	3.55	3.6	3.59	3.63	3.55	3.59	3.58	3.55	3.5	3.45	3.51	3.54	3.52	3.54
History	2.92	2.95	2.77	2.8	2.86	2.9	2.76	2.81	2.89	2.8	2.8	2.87	2.93	2.89	2.84	2.88
Mathematical and Computer Science	2.79	2.83	2.84	2.99	2.9	2.96	3	2.92	3.04	3.07	2.94	3.1	2.99	2.91	3.0	3.04
Modern Language	3.29	3.3	3.34	3.31	3.42	3.4	3.33	3.38	3.45	3.4	3.5	3.4	3.39	3.48	3.38	3.36
OT	3.46	3.5	3.37	3.61	3.51	3.71	3.57	3.56	3.57	3.57	3.51	3.51	3.46	3.58	3.5	3.52
Philosophy	3.03	3.09	3.05	3.14	3.14	3.11	3.15	3.18	3.25	3.41	3.26	3.19	3.08	3.19	3.32	3.41
Phys Ed	3.75	3.7	3.82	3.62	3.78	3.65	3.94	3.89	3.82	3.88	3.91	3.82	3.82	3.9	3.8	3.83
Physics & Engineering	3.1	3.18	3.09	3.29	3.12	3.21	3.12	3.22	3.27	3.23	3.12	3.26	3.11	3.28	3.35	3.42
Political Science	2.88	2.84	2.84	2.82	2.88	2.91	2.77	2.79	3.12	2.99	3.07	2.83	2.93	3.0	2.99	2.91
Psychology	3.07	2.99	2.97	2.89	2.93	2.98	2.9	3.01	2.90	3.08	2.92	3.07	2.98	3.09	3.04	3.11
Religious Studies	3.47	3.41	3.52	3.43	3.5	3.54	3.4	3.38	3.28	3.42	3.41	3.4	3.54	3.44	3.39	3.3
Social Work	3.32	3.55	3.48	3.49	3.41	3.48	3.39	3.5	3.49	3.7	3.39	3.43	3.57	3.66	3.52	3.56
Sociology/Anthropology	3.17	3.12	3.21	3.14	3.28	3.11	3.16	2.96	3.16	3.15	3.09	3.11	3.17	2.96	3.08	3.12
All College Average	3.22	3.26	3.24	3.28	3.28	3.32	3.23	3.28	3.27	3.32	3.27	3.32	3.22	3.28	3.24	3.27

- Data source: Registration and Records
- Excludes CCEDL data

Honorary Degree Recipient

May 19, 1984	Harvey S. Kline George R. Packard Jean Lebeau Samuel S. Fox	May 20, 1989	John H. Hostetler Carlos R. Leffler Nathan A. Scott, Jr.	May 20, 1995	Carl Ellenberger, Jr. Robert D. Guthrie '65 Dorothy L. Lyet Kenneth L. Wolfe
May 18, 1985	Benjamin Ladner Willis W. Shenk Caleb W. Bucher Julian Jaynes	May 19, 1990	V. Lester Schreiber R. Wesley Shope Helen A. Thomas	May 11, 1996	Glenn Y. Forney Mary Patterson McPherson Donald Reid Gerhard E. Spiegler
May 17, 1986	Dick Clark Benjamin G. Musser Wayne A. Nicarry	February 5, 1991	Rozanne L. Ridgway	May 17, 1997	Thomas A. Adams Brian C. Mitchell Daniel H. Raffensperger
May 16, 1987	Edgar T. Bitting '50 John R. Coleman Nineth M. de Garcia Hannach Sachs Cantor Yetta Sachs Carpenter Jacob H. Ruhl	May 18, 1991	Hartmut Von Hentig Stasys Lozoraitis, Jr. Robert J. Reinstein	May 16, 1998	Arthur L. Caplan Janice L. Ruhl '54
April 21, 1988	Willy Brandt	May 23, 1992	Ida K. Chen Ernest W. Lefever Malkia Roberts	May 15, 1999	Constance A. Morella David Little Kenneth L. Bowers '59
May 21, 1988	Baruch S. Blumberg H. Lamar Gibble Bernard C. Watson	May 22, 1993	S. Dale High '63 Robert F. Nation '49 Senator Harris Wofford	May 20, 2000	Dr. Holmes Morton Mrs. Anne B. Sweigart
		May 21, 1994	Dwight L. Evans Clifford B. Huffman Judith Sheindlin	May 19, 2001	Dr. Eugene Hickok Reverend Edward M. Bailey Mr. Michael A. Young

Honorary Degree Recipients (cont'd.)

May 18, 2002	Dame Janet Trotter Rt. Hon. David Trimble	May 21, 2005	Anne Beiler Dr. Doris Gordon Susan Eckert	May 16, 2009	Mary Ellen McNish Peter Whipple
May 17, 2003	The Honorable Thomas J. Ridge Linda L. Castagna Calvin L. Duncan	May 20, 2006	Christopher T. Gates John B. Craig Frank M. Masters, Jr.	May 13, 2010	David E. Hosler '72 Dr. Michael L. Lomax
May 22, 2004	The Rev. Dr. Nathan D. Baxter Douglas Pfautz	May 19, 2007	David J. Brightbill Derek C. Hathaway	May 21, 2011	Theodore E. Long, Ph.D. Betty G. Long Thomas R. Kepple, Jr.
October 6, 2004	Yukiyasu Sezai	May 17, 2008	Dr. Arthur E. Levine		

The High Library Holdings and Circulation

	2001-02	2002-03	2003-04	2004-05	2005-06	2006-07	2007-08	2008-09	2009-10	2010-11
<u>Total Volumes</u> (books and bound periodicals)	175,130	178,110	180,694	183,694	186,439	188,835	190,877	260,037	256,342	258,577
<u>Total Non-Print Items*</u>										
<u>Interlibrary Loan</u>	63,936	65,138	66,430	66,667	67,911	68,917	67,240	67,619	68,254	68,573
Borrowed Items	2,731	4,016	5,213	5,306	5,477	6,924	7,658	7,331	6,952	6,817
Loaned	3,008	2,825	2,927	2,990	2,552	2,428	2,533	2,218	2,486	2,163
<u>Total Library Circulation</u>	14,008	12,436	28,671	27,490	27,004	23,502	27,062	26,590	28,249	27,419
<u>Total Library Expenditures</u>	\$955,949	\$964,502	\$955,725	\$969,062	\$1,027,920	\$1,069,554	\$1,014,571	\$1,268,000	\$1,211,356	\$1,231,994
<u>Total Library Instruction Sessions</u>	-	-	-	62	66	88	74	72	91	83
<u>Total Number of Visits</u>	-	-	-	135,144	154,507	158,031	165,116	161,834	191,805	201,91
<u>Total Number of Database Searches (EBSCOhost)</u>	-	-	-	134,697	162,906	143,687	154,602	263,374	327,631	373,392

*Includes records, microforms, scores, tapes, slides, cassettes, films; calculated as 40 slides = 1 volume and 10 fiche sheets = 1 volume

➤ Data source: High Library

Finances

Student Costs by Year

Year	Tuition	Room	Board	Activity Fee	Network/ Comm. Fee	Total
1977-78	\$2,872	\$675	\$740	\$125		\$4,412
1978-79	\$3,122	\$750	\$815	\$125		\$4,812
1979-80	\$3,372	\$825	\$890	\$125		\$5,212
1980-81	\$3,690	\$900	\$975	\$135		\$5,700
1981-82	\$4,230	\$1,025	\$1,110	\$135		\$6,500
1982-83	\$4,740	\$1,110	\$1,190	\$135		\$7,175
1983-84	\$5,260	\$1,210	\$1,280	\$135		\$7,885
1984-85	\$5,950	\$1,295	\$1,370	\$135		\$8,750
1985-86	\$6,630	\$1,400	\$1,450	\$135		\$9,615
1986-87	\$7,175	\$1,500	\$1,550	\$150		\$10,375
1987-88	\$7,875	\$1,550	\$1,600	\$175		\$11,200
1988-89	\$8,650	\$1,600	\$1,650	\$185		\$12,085
1989-90	\$9,500	\$1,700	\$1,800	\$200		\$13,200
1990-91	\$10,400	\$1,850	\$1,900	\$300		\$14,450
1991-92	\$11,325	\$1,950	\$2,000	\$325		\$15,600
1992-93	\$12,200	\$2,050	\$2,050	\$350		\$16,650
1993-94	\$13,200	\$2,150	\$2,100	\$400		\$17,780
1994-95	\$14,190	\$2,200	\$2,200	\$400		\$18,990
1995-96	\$15,090	\$2,275	\$2,275	\$400		\$20,040
1996-97	\$15,440	\$2,350	\$2,350	\$450	\$230	\$20,820
1997-98	\$16,230	\$2,400	\$2,500	\$450	\$250	\$21,830
1998-99	\$17,050	\$2,600	\$2,600	\$450	-	\$22,700
1999-00	\$17,770	\$2,680	\$2,700	\$450	-	\$23,600
2000-01	\$19,100	\$2,800	\$2,800	-	-	\$24,700
2001-02	\$20,200	\$2,950	\$2,850	-	-	\$26,000
2002-03	\$21,350	\$3,050	\$2,950	-	-	\$27,350
2003-04	\$22,500	\$3,150	\$3,150	-	-	\$28,800
2004-05	\$23,710	\$3,300	\$3,300	-	-	\$30,310
2005-06	\$25,200	\$3,450	\$3,450	-	-	\$32,100
2006-07	\$26,950	\$3,650	\$3,650	-	-	\$34,250
2007-08	\$29,000	\$3,800	\$3,800	-	-	\$36,600
2008-09	\$30,650	\$3,950	\$4,000	-	-	\$38,600
2009-10	\$31,800	\$4,050	\$4,100	-	-	\$39,950
2010-11	\$33,250	\$4,250	\$4,250	-	-	\$41,750
2011-12	\$34,830	\$4,400	\$4,400	-	-	\$43,630

- Data source: Business Office
- Excludes CCEDL data

Financial Aid Disbursement

Sources	2004-05	2005-06	2006-07	2007-08	2008-09		2009-10		2010-11	
					Total Dollars	Student Recipients	Total Dollars	Student Recipients	Total Dollars	Student Recipients
Dean’s Scholarships	\$2,547,215	\$3,344,812	\$3,908,440	\$3,848,655	\$3,875,646	426	\$4,293,675	437	\$4,402,894	433
Provost Scholarships	\$4,876,558	\$4,945,233	\$5,272,856	\$5,370,415	\$5,463,246	496	\$5,741,700	475	\$5,785,046	462
Presidential Scholarships	\$2,177,660	\$2,574,374	\$2,706,750	\$2,738,500	\$2,885,265	213	\$3,773,000	255	\$4,624,951	300
International Scholarships	\$1,074,898	\$1,064,690	\$1,013,338	\$796,700	\$739,293	41	\$1,025,650	54	\$1,428,500	65
Parish Awards/Grants	\$97,000	\$92,651	\$75,250	\$58,250	\$43,000	18	\$45,500	18	\$40,000	16
Sibling Grants	\$29,000	\$24,000	\$26,500	\$29,500	\$30,000	63	\$26,000	56	\$16,000	34
Trustee Grants	\$6,332,677	\$6,332,673	\$6,636,182	\$6,987,692	\$7,583,648	994	\$8,122,096	1045	\$8,492,520	1054
Endowed Scholarships	\$436,162	\$387,558	\$433,375	\$479,927	\$559,359	223	\$506,478	216	\$513,911	201
PELL	\$800,077	\$726,324	\$728,932	\$810,586	\$932,305	329	\$1,606,831	464	\$1,958,489	565
SEOG	\$262,208	\$330,991	\$192,047	\$192,047	\$255,385	324	\$267,768	453	\$235,957	358
PHEAA	\$1,828,645	\$1,897,644	\$2,135,356	\$2,066,442	\$1,609,602	581	\$1,853,498	661	\$1,551,888	611
Work-Study (Fed. & Inst. Match)	\$325,286	\$348,241	\$338,208	\$445,440	\$456,863	559	\$462,202	577	\$468,801	589
Institutional Employment (earnings)	\$477,705	\$460,762	\$531,085	\$620,480	\$622,204	655	\$613,794	495	\$612,517	673
Perkins (Fed. & Inst. Match)	\$343,750	\$324,155	\$247,000	\$219,000	\$217,404	220	\$256,863	262	\$241,500	246
Stafford Sub. Loan (Student)	\$4,614,579	\$4,586,286	\$4,782,788	\$5,432,286	\$5,422,337	1,242	\$5,924,840	1,377	\$6,032,362	1382
Stafford Unsub. Loan (Student)	\$2,200,110	\$2,611,895	\$2,709,546	\$2,858,519	\$4,353,348	1,073	\$5,833,971	1,555	\$5,828,256	1592
Alternative Loans (Student)	\$3,867,813	\$4,091,336	\$4,946,883	\$5,096,503	\$5,171,936	423	\$3,681,520	320	\$3,411,446	280
PLUS (Parent Loan)	\$3,525,519	\$4,562,874	\$4,893,270	\$5,012,930	\$5,505,616	347	\$5,346,645	379	\$6,243,325	431

Note: Only Major Programs Listed

Financial Aid Disbursement (cont'd.)

Sources	2004-05	2005-06	2006-07	2007-08	2008-09		2009-10		2010-11	
					Total Dollars	Student Recipients	Total Dollars	Student Recipients	Total Dollars	Student Recipients
Federal *	\$1,731,321	\$1,731,961	\$1,601,937	\$1,790,218	\$2,014,563	818	\$2,819,039	922	\$3,190,272	957
State +	\$1,998,076	\$2,096,884	\$2,337,119	\$2,303,223	\$1,722,803	615	\$1,976,634	693	\$1,703,476	651
Institutional FT Student Benefits (Tuition Remission & Exchange)	\$1,260,075	\$1,345,319	\$1,486,738	\$1,626,090	\$1,818,020	63	\$2,292,712	74	\$2,405,113	75
Institutional Employment %	\$596,505	\$584,588	\$679,184	\$795,549	\$795,417	655	\$613,794	495	\$776,805	673
Institutional Aid	\$18,063,477	\$19,214,632	\$20,689,741	\$21,290,040	\$22,073,823	1,744	\$24,697,712	1,772	\$26,340,045	1771
Stafford Student Loans (Subsidized)	\$4,614,579	\$4,586,286	\$4,782,788	\$5,432,286	\$5,422,337	1,242	\$5,924,840	1,337	\$6,032,362	1382
Stafford Student Loans (Unsubsidized)	\$2,200,110	\$2,611,895	\$2,709,546	\$2,858,519	\$4,353,348	1,073	\$5,833,971	1,555	\$5,828,256	1,592
PLUS (Parent Loan)	\$3,525,519	\$4,562,874	\$4,893,270	\$5,012,930	\$5,505,616	347	\$5,346,645	379	\$6,243,325	431
Private #	\$4,705,757	\$4,988,565	\$5,897,150	\$6,279,108	\$6,337,842	695	\$5,054,288	679	\$4,616,985	623
GRAND TOTAL	\$38,695,419	\$41,723,004	\$45,077,473	\$47,387,963	\$50,073,419	2,103	\$54,750,933	2,173	\$57,163,274	2,236

* Federal Sources include PELL, SEOG, ACG, SMART, AmeriCorps, PERKINS, and Work-study

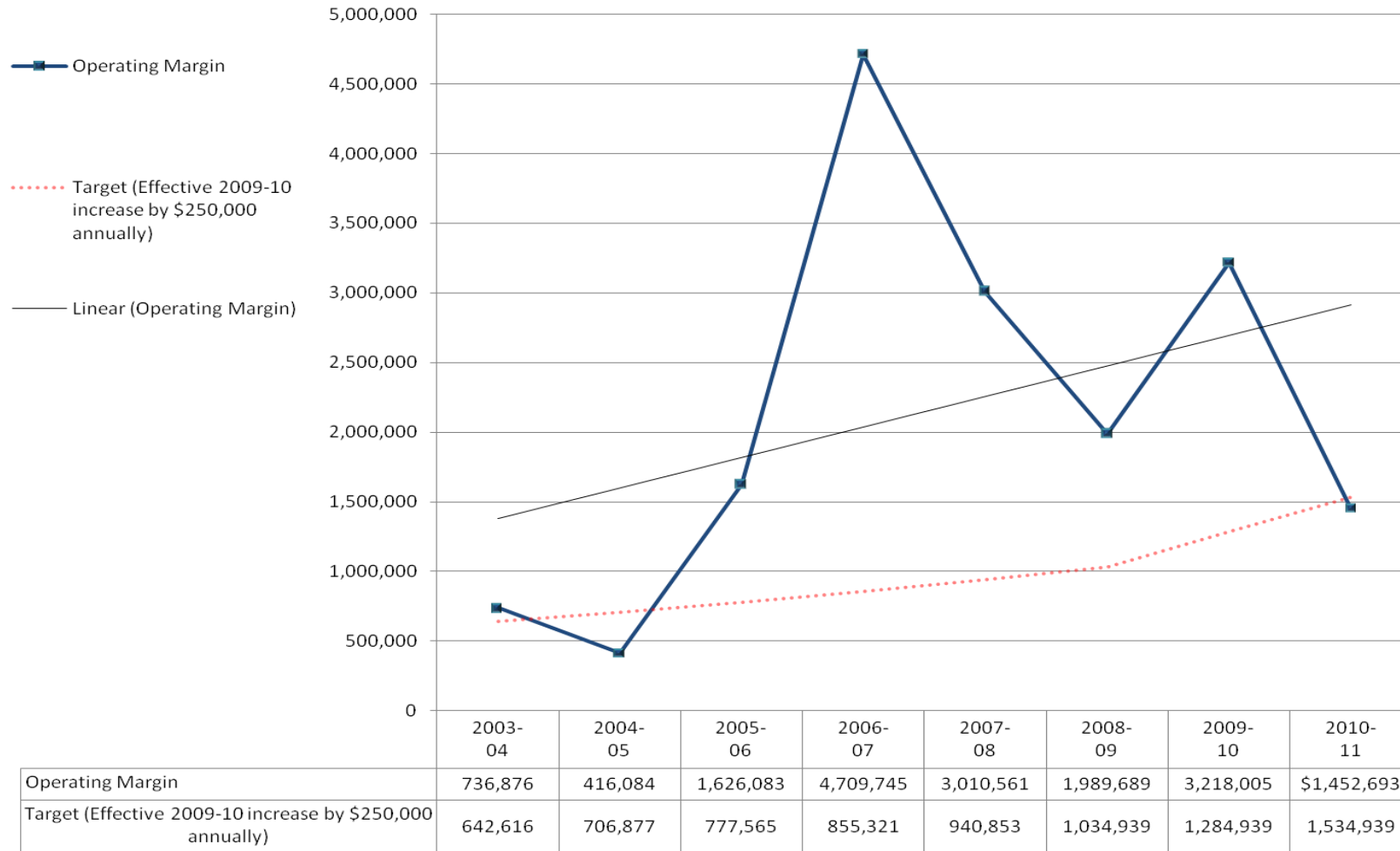
+ State Sources include PHEAA,OVR, Byrd Scholarship, other State Aid

% Institutional Employment includes RA Room Waiver

Private Sources include student alternative & private loans, outside scholarships, employer tuition benefits

Operating Margin

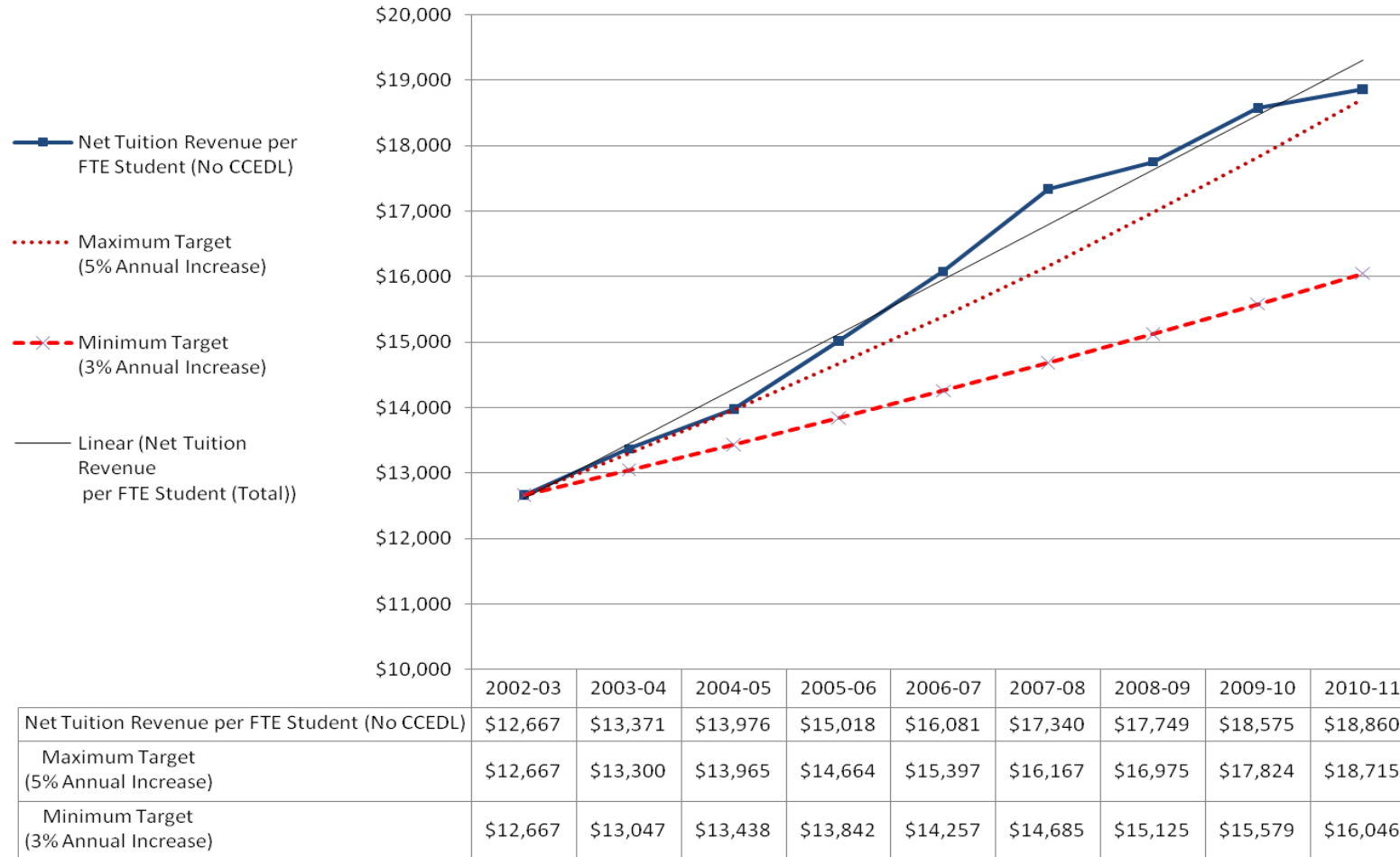
Operating Margin



- Data source: Business Office
- Includes CCEDL data

Net Student Revenue per FTE Student

Net Tuition Revenue per FTE Student



- Data source: Business Office
- Excludes CCEDL data

Endowment per Full-Time Student

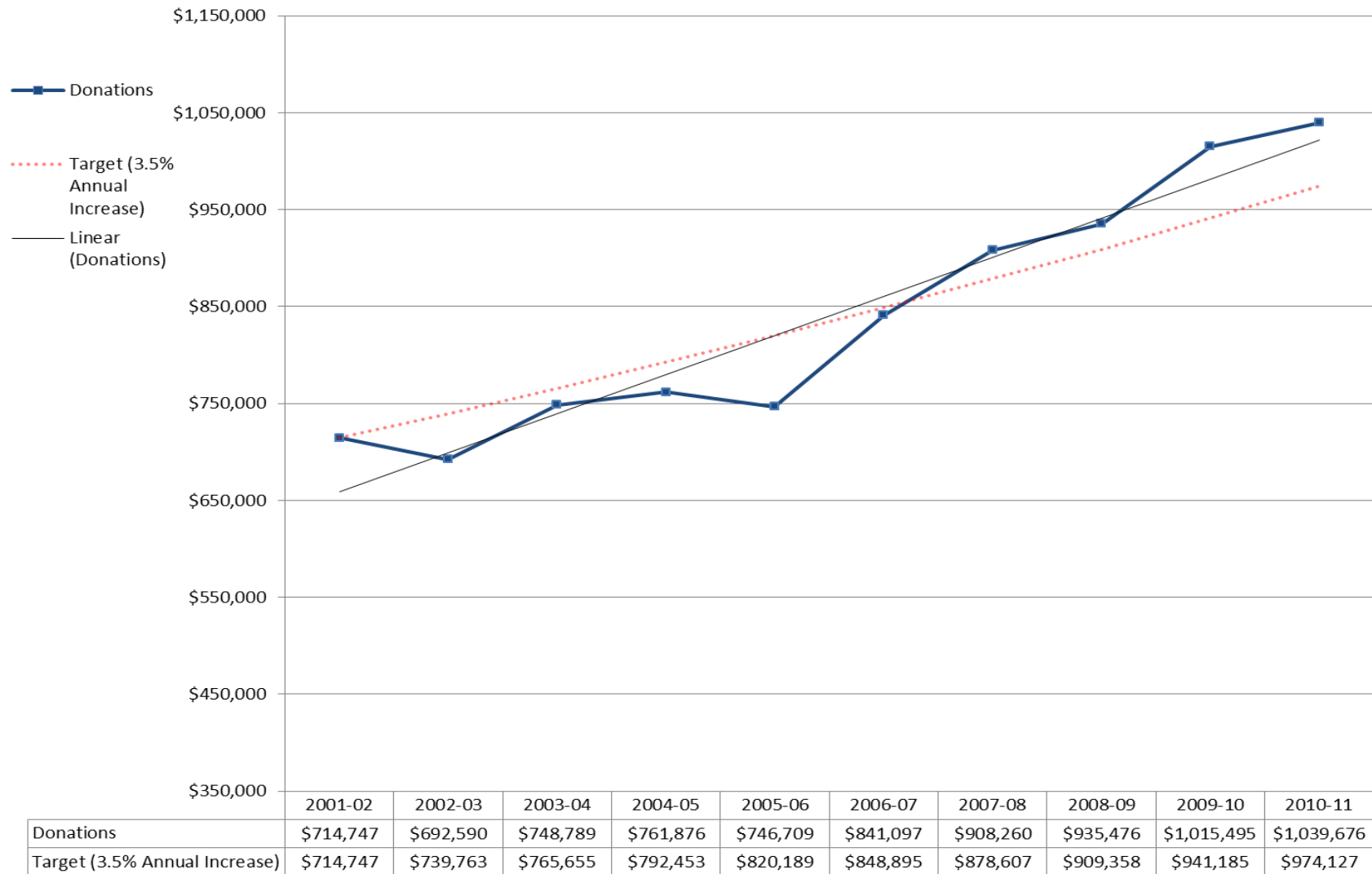
Endowment per Full Time Student



- Data source: Business Office
- Excludes CCEDL data

Unrestricted Annual Fund

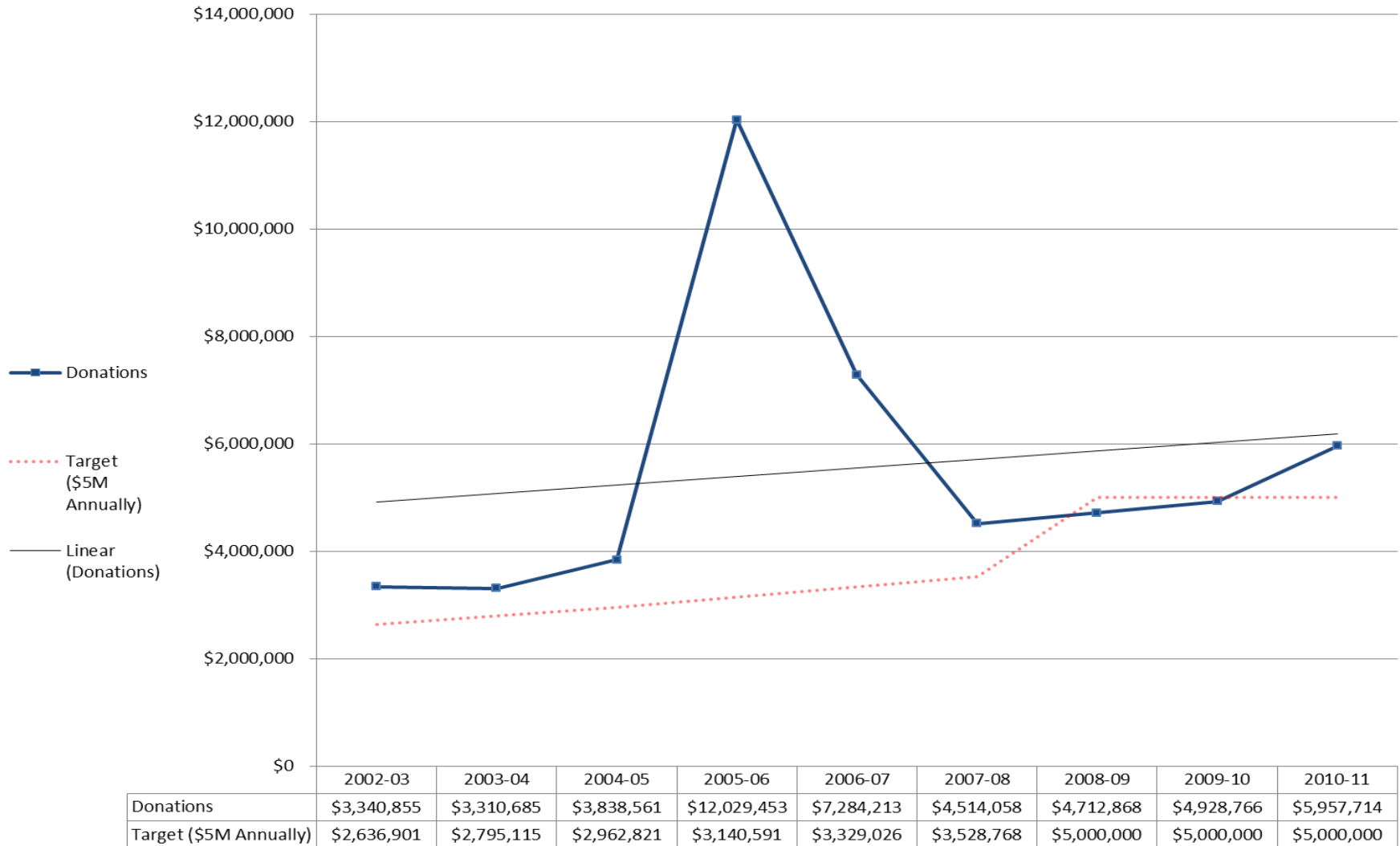
Unrestricted Annual Fund



➤ Data source: Advancement Office

Total Gift Dollars by Year

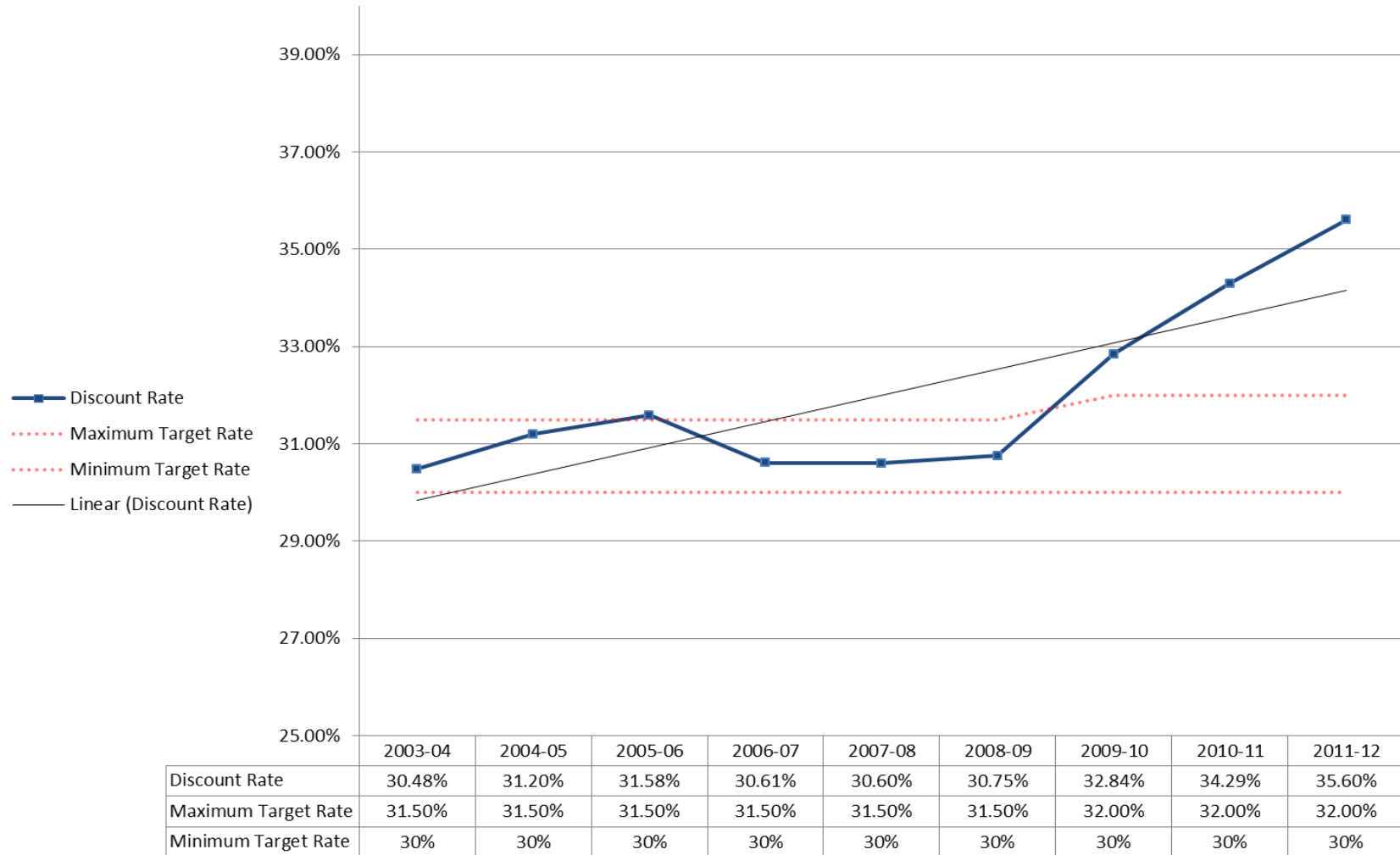
Total Gift Dollars



➤ Data source: Advancement Office

Student Discount Rate

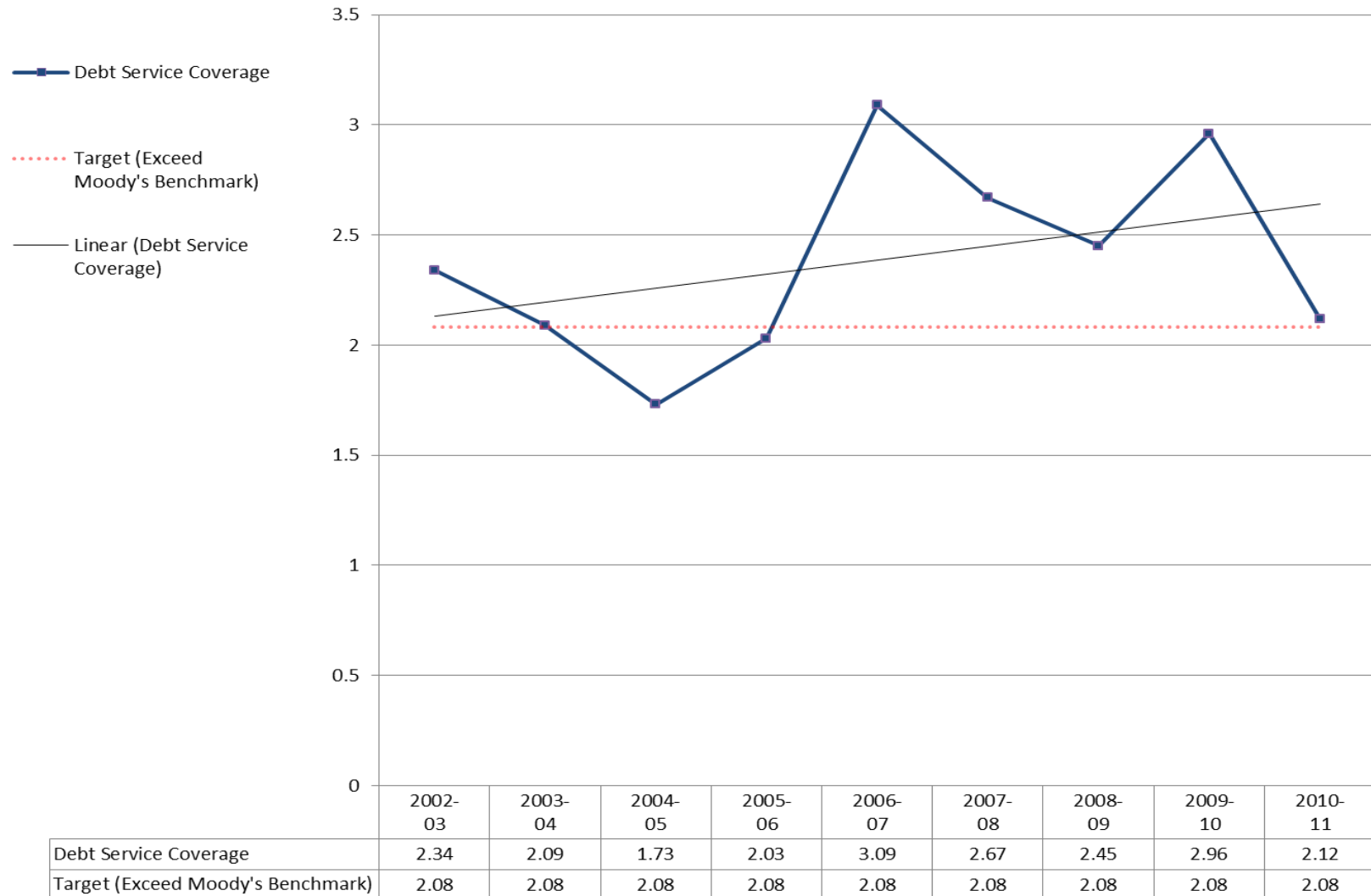
Student Discount Rate (Comprehensive Fee)



- Data source: Business Office and Financial Aid
- Excludes CCEDL data

Debt Service Coverage

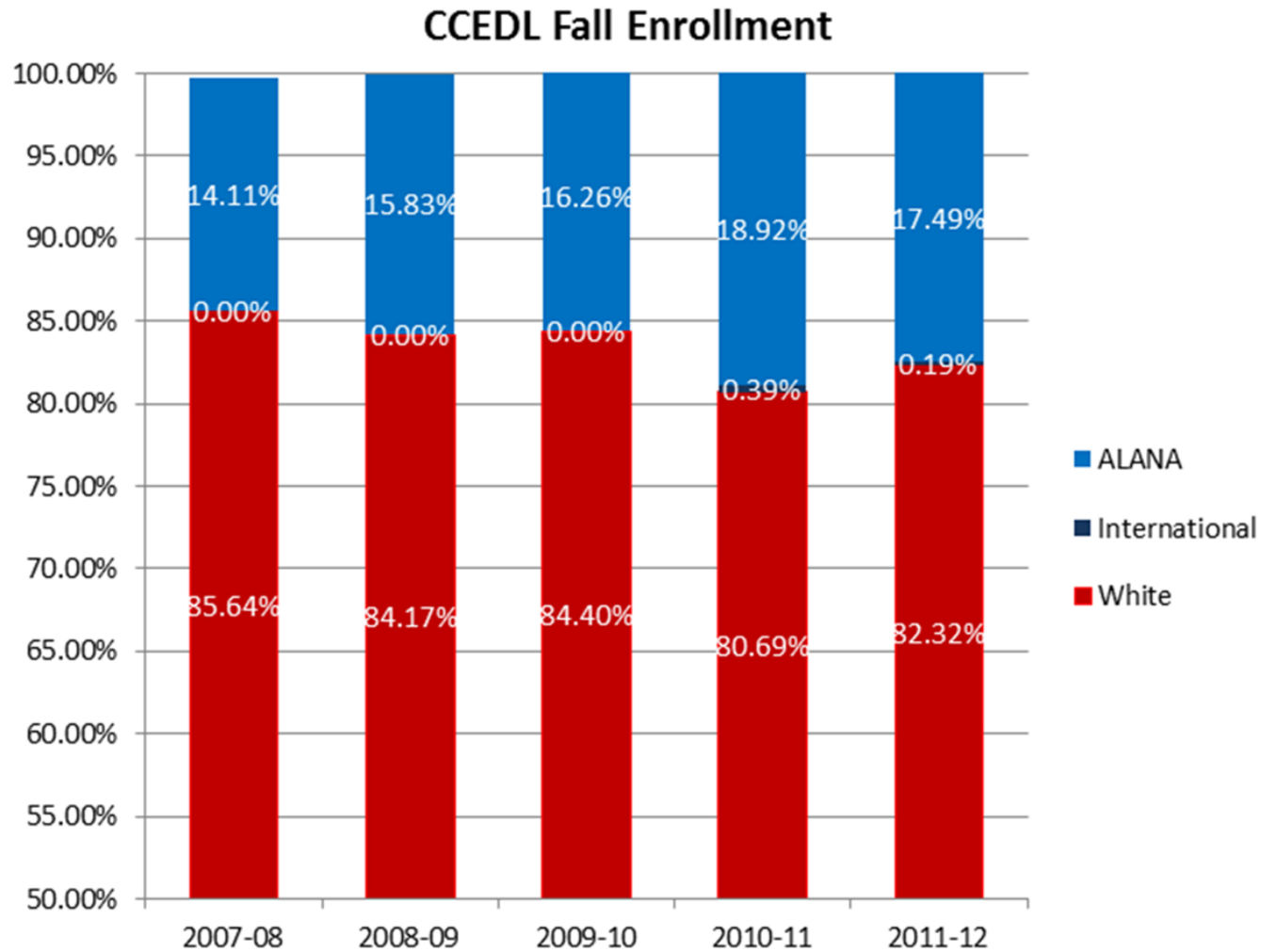
Debt Service Coverage



➤ Data source: Business Office

Center for Continuing Education and Distance Learning (CCEDL)

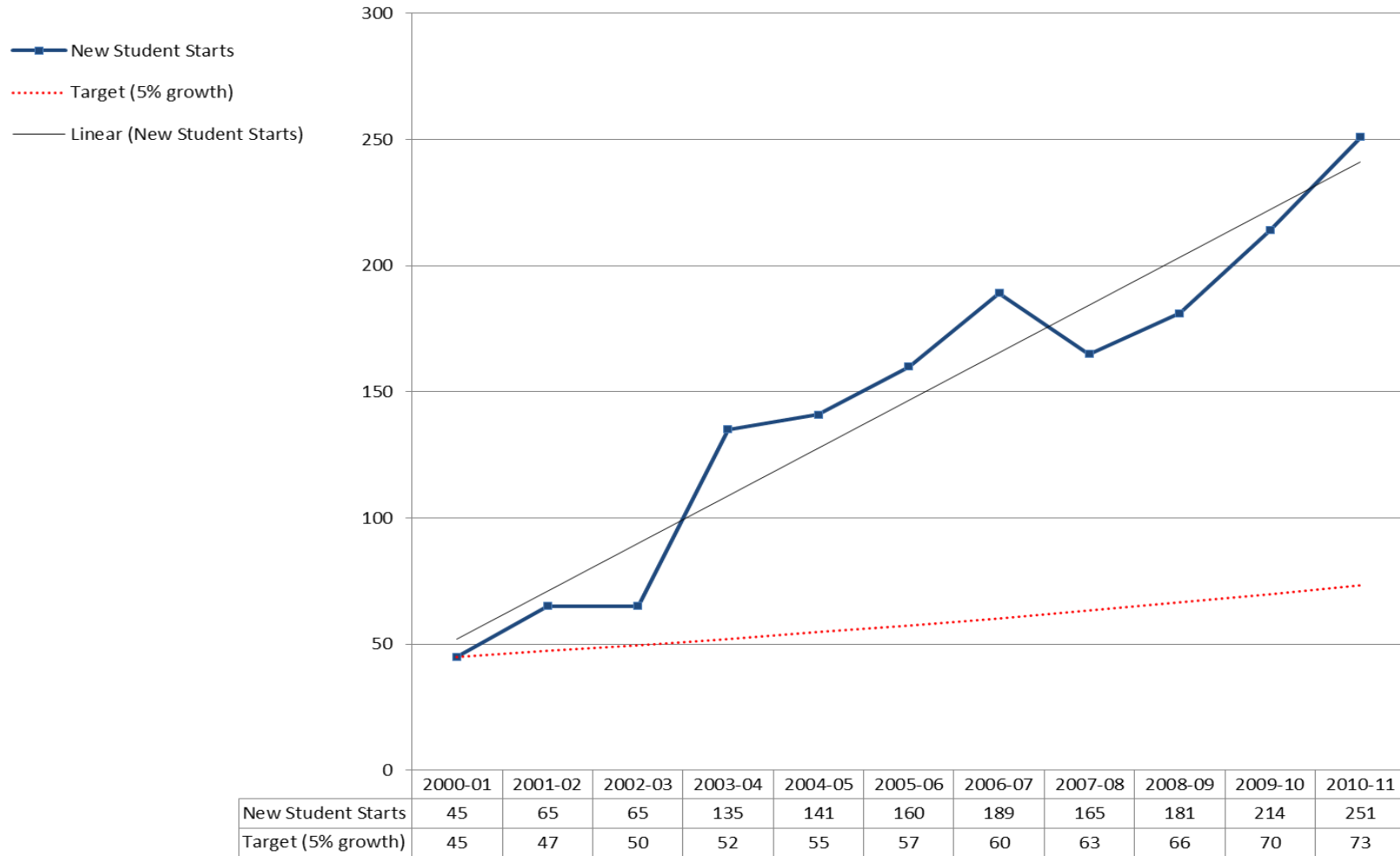
CCEDL Fall Enrollment by Ethnicity



- Data as of the 4-week report.
- Includes all CCEDL students.
- Unknown Race is omitted.
- International does not include US Permanent Residents.

CCEDL New Student Starts

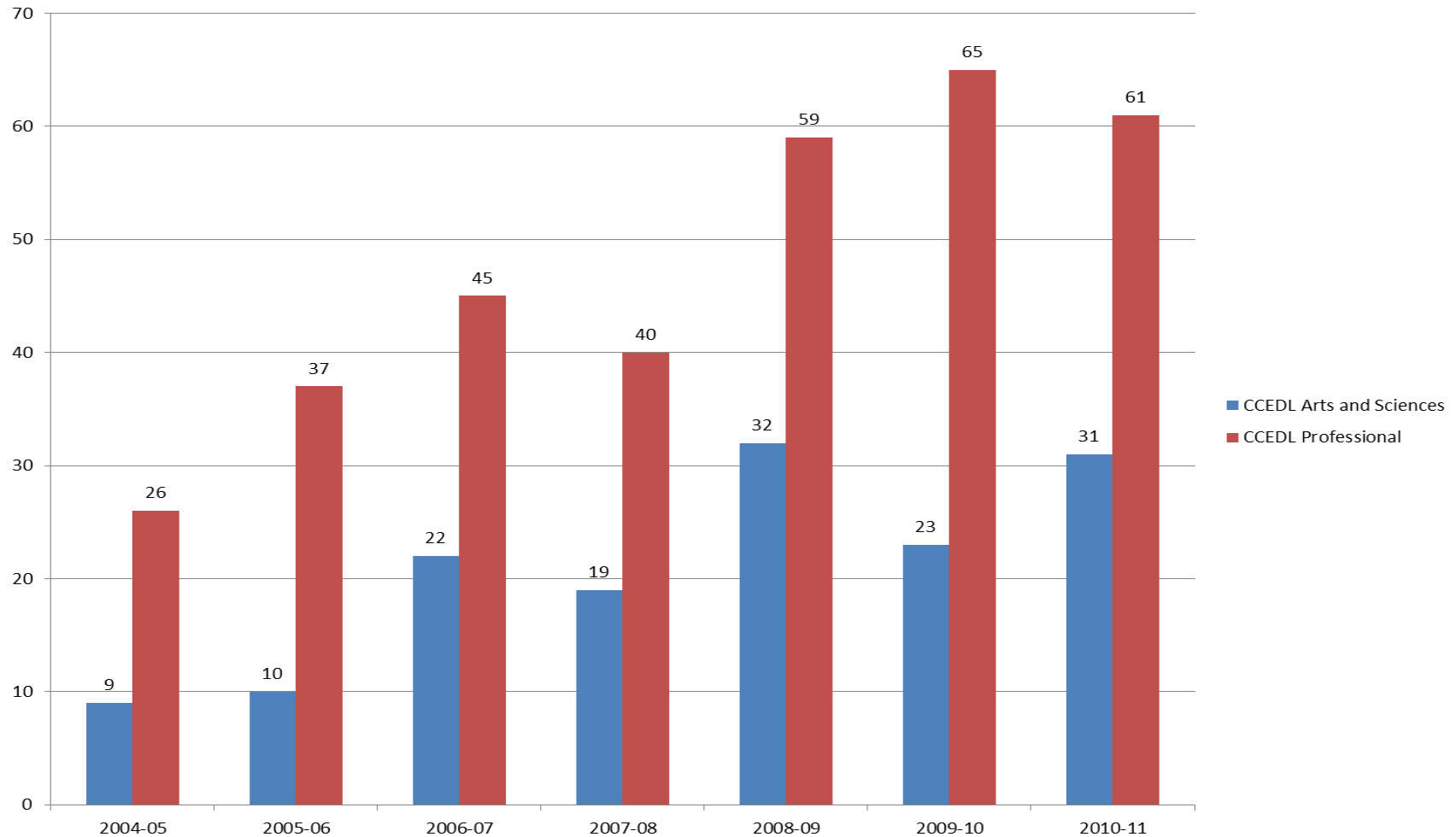
CCEDL New Student Starts



- Data source: CCEDL
- Includes CCEDL data only

CCEDL Undergraduate Completions: Arts/Sciences versus Professional (Based on Carnegie Classifications)

**CCEDL Undergraduate Completions: Arts/Sciences versus Professional
(Carnegie Classifications)**



- Data source: Registration and Records
- Includes only CCEDL student data
- Includes first major and second major (July 1st – June 30th)

Declared Majors – CCEDL Only

Declared Majors – CCEDL Only

Data Source = Fall 4-week Data (Note: A substantial number of CCEDL students may register and matriculate for the semester after the 4-week point.)

	2007-08	2008-09	2009-10	2010-11	2011-12
Associates Degrees					
Accounting	14	12	7	10	11
Business Administration	39	42	47	42	42
Corporate Communication	8	12	11	15	8
Criminal Justice	7	7	6	7	7
Human Services	0	0	2	19	16
Information Systems	2	4	1	13	7
Totals	70	77	74	106	91
Bachelor's Degrees					
Accounting	42	45	47	49	59
Business Administration	125	126	158	169	163
Business Administration - Accounting	4	6	5	9	7
Business Administration - Information Systems	0	0	0	2	1
Chemistry	1	0	0	0	0
Communications - Public Relations	5	2	1	0	0
Computer Science	1	0	0	0	0
Corporate Communication	40	44	34	36	35
Criminal Justice	31	23	30	29	24
EXCEL Business Administration	0	0	0	1	1
EXCEL Corporate Communications	*	*	*	1	1
EXCEL Criminal Justice	1	0	0	2	2
EXCEL Public Administration	1	0	0	0	0
EXCEL Religious Studies (NLO eff. 5/31/10)	1	0	0	1	0
Human Services	0	0	4	22	29
Human Services - Behavioral & Addictions Counseling	0	0	0	9	13
Information Systems	26	28	44	44	33
Psychology	1	0	0	0	0
Religious Studies	0	1	0	1	0
Social Work	2	3	3	2	1
Totals	282	278	326	377	369

Declared Majors – CCEDL Only

Data Source = Fall 4-week Data (Note: A substantial number of CCEDL students may register and matriculate for the semester after the 4-week point.)

2007-08 2008-09 2009-10 2010-11 2011-12

Certification

Accounting	0	1	0	0	1
Information Systems	0	0	0	1	1
Management	2	4	1	1	1
Totals	2	5	1	2	3

Diploma

Accounting	4	5	1	3	2
CCEDL Undecided/Undeclared	1	0	0	0	0
Corporate Communication	0	1	1	0	0
Human Resource Management	0	0	1	0	0
Information Systems	0	0	0	0	1
Management	0	0	1	1	1
Totals	5	6	4	4	4

Non-Degree

Accounting	0	0	1	0	0
Information Systems	0	0	2	2	0
Not in a Degree Program	44	47	45	26	50
Totals	44	47	48	28	50

*=Not Offered

NLO = No Longer Offered

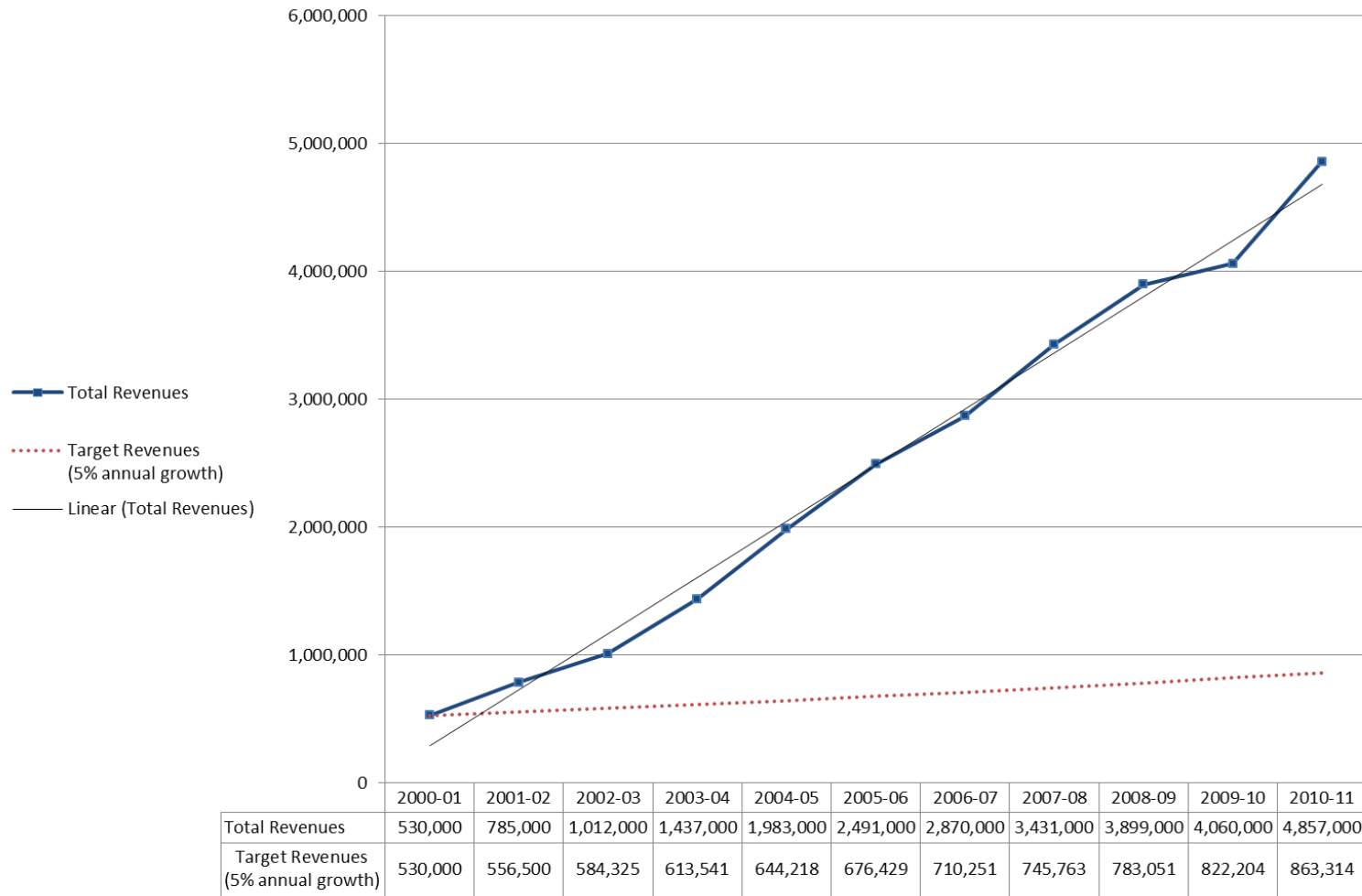
Declared Minors – CCEDL Only

Declared Minors – CCEDL Only
(Data Source = Fall 4-week Data)

Minor	<u>2007-08</u>	<u>2008-09</u>	<u>2009-10</u>	<u>2010-11</u>	<u>2011- 12</u>
Biology	1	1	0	0	0
Business Administration	2	3	1	5	5
Communications	3	4	5	4	5
Criminal Justice	1	2	2	2	3
Human Services	0	0	1	3	3
Information Systems	1	2	2	2	1
Modern Languages – Japanese	1	0	0	0	0

CCEDL Revenues

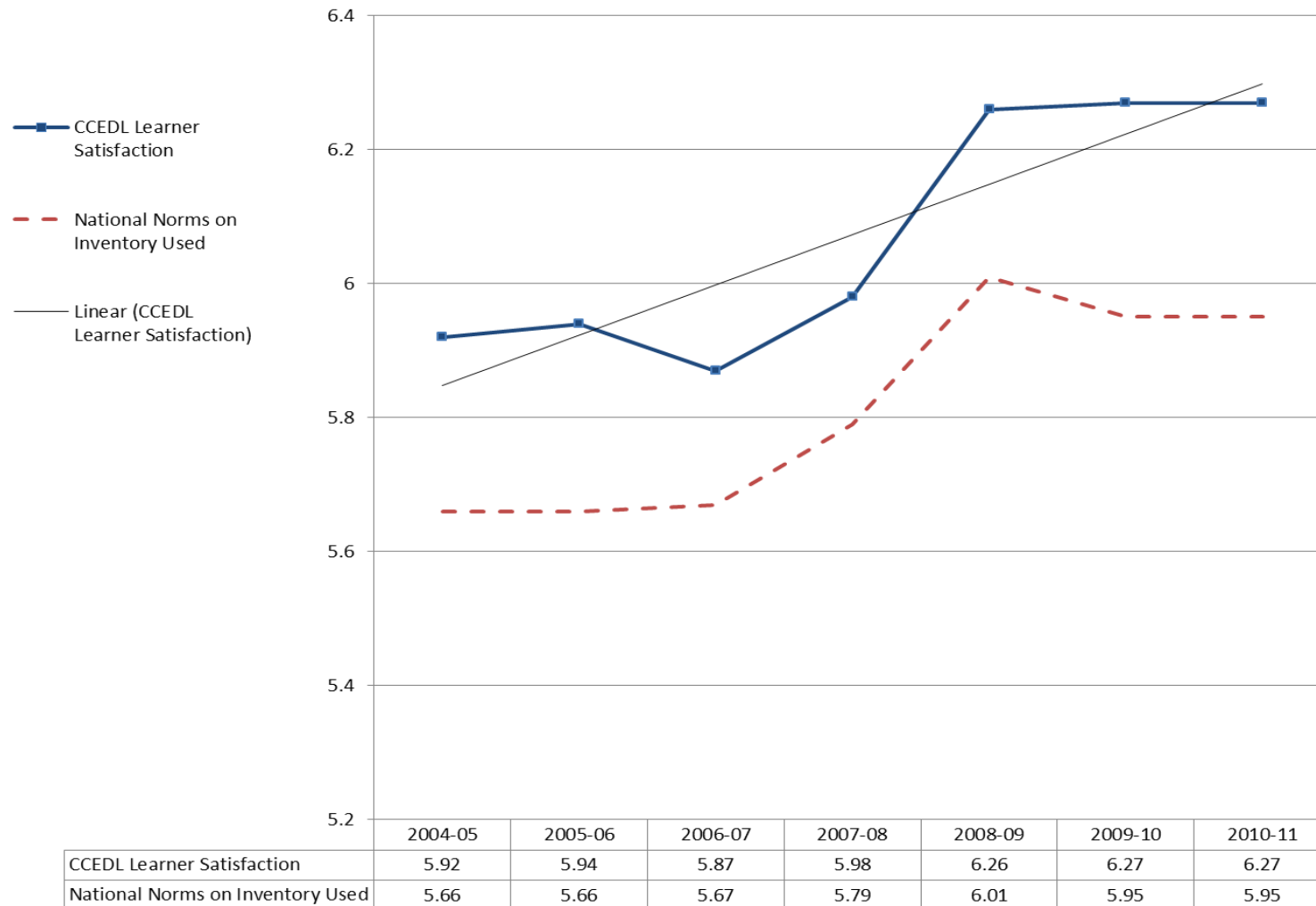
Center for Continuing Education and Distance Learning Revenues



- Data source: CCEDL
- Includes CCEDL data only

CCEDL Student Learning Satisfaction

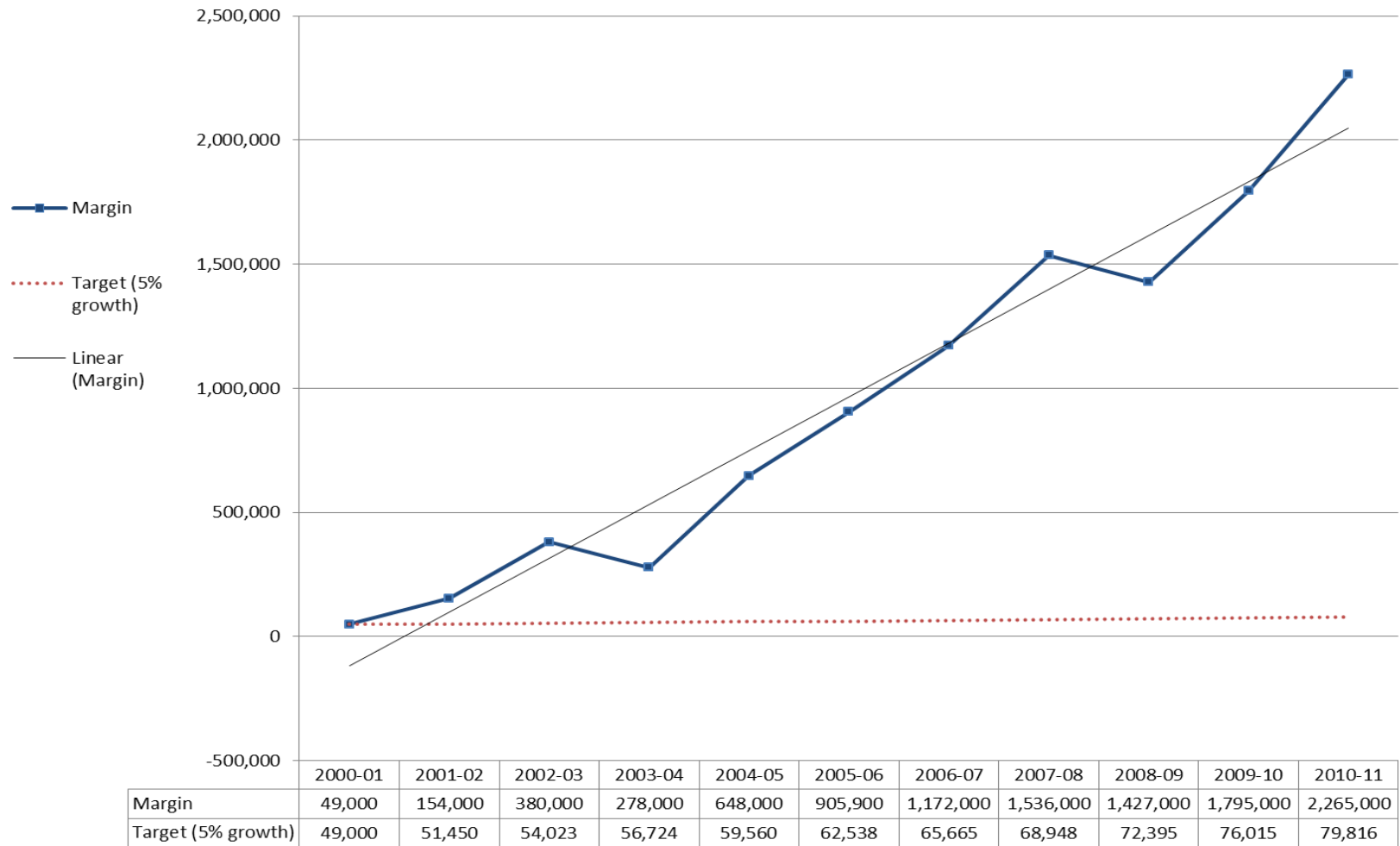
CCEDL Learner Satisfaction



- Data source: CCEDL
- Includes CCEDL data only

CCEDL Margin

CCEDL Margin



- Data source: CCEDL
- Includes CCEDL data only