

TRANSFER STUDENT GUIDE

LIVE
YOUR
BEST
LIFE!



ELIZABETHTOWN COLLEGE HAS BEEN NAMED ONE OF THE MOST TRANSFER-FRIENDLY COLLEGES IN THE COUNTRY BY PHI THETA KAPPA HONOR SOCIETY.

THE RIGHT FIT AT ETOWN



“You will make connections with so many people on campus who want to see you succeed. The College is so welcoming and truly feels like a community where you can thrive to be your best self!”

ELEXA STAUFFER '25
EARLY CHILDHOOD EDUCATION



“If you’re considering a transfer, you can be confident that Etown is a school that provides a welcoming and diverse community of students. The faculty and staff challenge you to be great and want to see each student excel in their craft!”

DONOVAN BAILEY '24,
GRAPHIC DESIGN

Our **TRANSFER BOOK SCHOLARSHIP** is available to first-time, first-semester transfer students who enroll full-time in the traditional day program as a renewable \$500 per year (\$250 per semester) award.

Transfer Scholarships

Recognizing your academic success and finding your place at Etown is of the utmost importance to us. All transfer students are automatically considered for renewable merit scholarships ranging from \$13,500 per year to \$19,000 per year (2022-23 academic year).

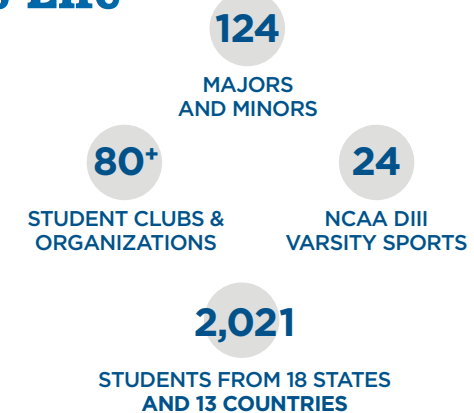
Members of Phi Theta Kappa (PTK) are also guaranteed to receive an additional \$1,000 per year scholarship.

Etown is a recognized Yellow Ribbon School with a VA Certifying Official. If you are a veteran, or the dependent of a veteran, learn more at etown.edu/veterans

\$27
MILLION AWARDED
IN INSTITUTIONAL
SCHOLARSHIPS
AND GRANTS

Vibrant Campus Life

At a place like Etown, you’re more than just a number. You will find an incredible sense of community—in the residence halls, in the library, and as you walk across campus. Fun, friends, leadership opportunities, service, sports, and other extracurriculars are an integral part of the college experience. Campus life is vibrant at Elizabethtown College!



“The transfer process to Etown went a lot better than I expected! I had an individual one-on-one meeting with the Coordinator of Transfer Recruitment at Etown who walked me through the transfer steps. She was incredibly personable and readily available for any questions that I had.”

JAMES ABBISS '25
EXERCISE SCIENCE

Seamless Transition

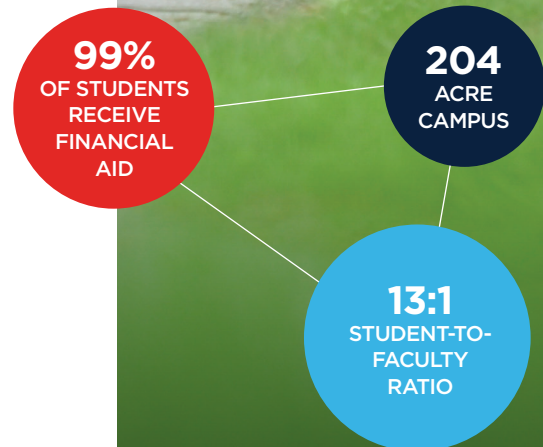
Etown provides access to all the right resources to ensure that students looking to make a change have a smooth transition. We offer:

- A simplified transfer experience.
- An expert transfer team to help you understand our transfer credit policies and answer all your questions.
- Academic advisors who will help you choose your major or plan your schedule.
- A designated financial aid counselor to help make your education more affordable.
- Guaranteed on-campus housing (for students under age 25).

Real-World Learning. Guaranteed.

What sets our students apart from others is their ability to transform what they learn in the classroom into demonstrated, real-world experiences. We refuse to leave that transformation to chance. As a part of your graduation requirements, you are guaranteed to participate in two of our five Signature Learning Experiences:

- SUPERVISED RESEARCH / INTERNSHIP, FIELD PLACEMENT OR PRACTICUM
- CROSS-CULTURAL EXPERIENCES / COMMUNITY-BASED LEARNING / CAPSTONE COURSE, DEVELOPMENT PORTFOLIO



We're here to help!



MEET THE ELIZABETHTOWN COLLEGE ADMISSIONS STAFF

etown.edu/transfer

OFFICE OF ADMISSIONS
1 Alpha Drive
Elizabethtown, PA 17022
717-361-1400
admissions@etown.edu



MAJORS AND CONCENTRATIONS

<p>Accounting</p> <p>Actuarial Science</p> <p>Asian Studies</p> <p>Biochemistry & Molecular Biology</p> <p>Biology <i>Biological Science</i> <i>Health Professions</i></p> <p>Biology Education (7-12)</p> <p>Biotechnology</p> <p>Business Administration <i>Accounting</i> <i>Economics</i> <i>Entrepreneurship & Family Business</i> <i>Finance</i> <i>Talent Management</i> <i>Marketing</i></p> <p>Business Analytics</p> <p>Chemistry <i>ACS Professional</i> <i>Chemical Physics</i> <i>Chemistry Management</i></p> <p>Chemistry Education (7-12)</p> <p>Chemistry Laboratory Sciences</p>	<p>Communications-Digital Media Production</p> <p>Communications-Journalism</p> <p>Communications-Public Relations</p> <p>Computational Physics</p> <p>Computer Science <i>Artificial Intelligence & Data Science</i> <i>Hardware</i> <i>Web & Application Design</i> <i>Cybersecurity (pending approval)</i></p> <p>Criminal Justice</p> <p>Data Science</p> <p>Economics</p> <p>Education/Early Childhood <i>Pre K-4</i> <i>DUAL Special Education Certification</i></p> <p>Education/Elementary Middle-Level (4-8)</p>	<p>Engineering <i>Biomedical</i> <i>Civil</i> <i>Computer</i> <i>Electrical</i> <i>Environmental</i> <i>Industrial & Systems</i> <i>Mechanical</i> <i>Mechatronics</i></p> <p>English-Literature</p> <p>English-Professional Writing</p> <p>English Education (7-12)</p> <p>Environmental Science</p> <p>Exercise Science <i>Pre-Physical Therapy</i></p> <p>Finance</p> <p>Financial Economics</p> <p>Fine Art</p> <p>Graphic Design</p> <p>Healthcare Administration</p> <p>History</p> <p>Individualized Major</p> <p>Integrative Studies</p>	<p>Information Systems</p> <p>International Business <i>Accounting</i> <i>Data Analytics</i> <i>Economics</i> <i>Entrepreneurship & Family Business</i> <i>Finance</i> <i>Talent Management</i> <i>Marketing</i> <i>Self-Designed</i></p> <p>Japanese</p> <p>Legal Studies</p> <p>Marketing</p> <p>Mathematics <i>Applied Mathematics</i> <i>Pure Mathematics</i></p> <p>Mathematical Business</p> <p>Mathematics Education (7-12)</p> <p>Music</p> <p>Music Education (Pre K-12)</p> <p>Music Therapy</p> <p>Neuroscience</p>	<p>Occupational Therapy* <i>5-year, entry-level master's or 6-year doctoral program: Student must have successfully completed B.S. in Health Sciences at Etown.</i></p> <p>Physician Assistant Studies* <i>5-year BS/MS</i></p> <p>Physics Education (7-12)</p> <p>Political Science</p> <p>Psychology</p> <p>Public Health</p> <p>Social Studies Education (7-12)</p> <p>Social Work</p> <p>Sociology</p> <p>Spanish</p> <p>Spanish Education (Pre K-12)</p>
--	---	--	--	--

MINORS

<p>Architectural Studies</p> <p>Arts Administration</p> <p>Asian Studies</p> <p>Biochemistry</p> <p>Biology</p> <p>Business Administration</p> <p>Chemistry</p> <p>Coaching</p> <p>Cognitive Science</p>	<p>Communications</p> <p>Computer Science</p> <p>Creative Writing</p> <p>Data Analytics</p> <p>Economics</p> <p>English Literature</p> <p>English Professional Writing</p> <p>Environmental Studies</p>	<p>Family Business & Entrepreneurship</p> <p>Finance</p> <p>Fine Art</p> <p>French</p> <p>General Science</p> <p>German</p> <p>Graphic Design</p> <p>History</p> <p>Human Services</p>	<p>Information Systems</p> <p>International Studies</p> <p>Japanese</p> <p>Marketing</p> <p>Mathematics</p> <p>Medical Humanities</p> <p>Music</p> <p>Philosophy</p> <p>Physics</p> <p>Political Science</p>	<p>Psychology</p> <p>Religious Studies</p> <p>Sociology</p> <p>Spanish</p> <p>Technical Communications</p> <p>Technical Design</p> <p>Women & Gender Studies</p>
---	---	---	--	---

JOINT DEGREES

<p>Allopathic Medicine</p> <p>Criminal Justice</p> <p>Dentistry</p> <p>Law</p>	<p>Medicine</p> <p>Optometry</p> <p>Osteopathic Medicine</p>	<p>Pharmacy</p> <p>Physical Therapy</p> <p>Social Work</p> <p>Veterinary Medicine</p>
--	---	---

By combining specialized undergraduate studies at Etown with direct admission to graduate school (at partner institutions like Penn State, Drexel, and Widener), you can earn your advanced degree in less time than taking a traditional route. This means you'll save money on tuition and enter the workforce sooner.

ADVANCED DEGREES

<p>Doctorate in Occupational Therapy* <i>6-year, entry-level doctoral program</i></p> <p>Counseling Psychology</p> <p>Curriculum and Instruction</p>	<p>Music Education</p> <p>Public Policy</p> <p>Special Education</p> <p>Physician Assistant Studies*</p>
---	--

*Transfer students are not eligible to apply.

3603-0723

EXPLORE ELIZABETHTOWN COLLEGE

Interested in learning more about our online, accelerated degree programs?

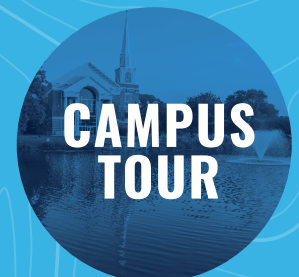
etown.edu/sgps

ETOWNGPS
ELIZABETHTOWN COLLEGE
SCHOOL OF GRADUATE & PROFESSIONAL STUDIES



VIRTUAL TOUR

WE'RE HERE 24/7!
Explore our website:
etown.edu



CAMPUS TOUR

WE'D LOVE TO SEE YOU!
Schedule a campus visit:
etown.edu/visit