

Green Room

“LC GREEN ROOM”

Space Features

- ✓ Capacity: 4 persons
- ✓ Layout: lounge-style with couch and recliner
- ✓ Mini-Fridge
- ✓ Water Tower
- ✓ TV
- ✓ Private Bathroom (handicap accessible shower included)
- ✓ ADA Requirements:
 - ✓ Seating and Doors are correct
 - ✓ Light Switch is 50” high



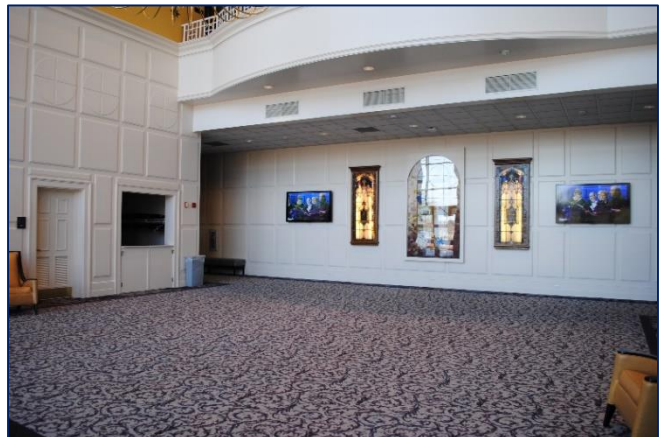
Note: Permission required from Director of Technical Operations and Supervisor of Special Events

Leffler Chapel Lobby

“LC LOBBY”

Space Features

- ✓ Limited seating available
- ✓ Mostly standing room
- ✓ Catering available upon request
 - ✓ Additional fees
- ✓ Meets all ADA Requirements



Note: Permission required from Director of Technical Operations and Supervisor of Special Events

M&M Mars Room

“LC M&M”

Space Features

- ✓ Capacity: 155 persons
(without tables and chairs)
- ✓ Smart room
 - ✓ Two (2) projection screens, sound capability, microphones
- ✓ Catering available upon request
 - ✓ Additional fees
- ✓ 3 sets of double doors
- ✓ 1 single door
- ✓ Meets all ADA Requirements

Note: Permission required from Director of Technical Operations and Supervisor of Special Events

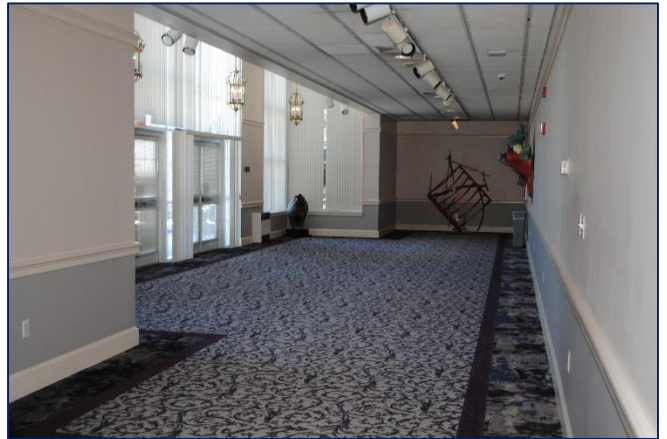


McCormick Gallery

“LC MCCG”

Space Features

- ✓ Capacity: 84 persons
(without tables and chairs)
- ✓ Catering available upon request
 - ✓ Additional fees
- ✓ Tables and chairs available upon request
- ✓ Meets all ADA Requirements



Note: Permission required from Director of Technical Operations and Supervisor of Special Events

Musser Auditorium

“LC MUS”

Space Features

- ✓ Capacity: 844 persons
- ✓ Layout: As-Is, fixed pews
- ✓ Event venue lighting and sound systems
- ✓ Pianos and organs available
- ✓ Video and projection capabilities
- ✓ Full-time technical staff
- ✓ ADA Requirements:
 - ✓ Seating and doors correct
 - ✓ Light Switch is 51.5” high



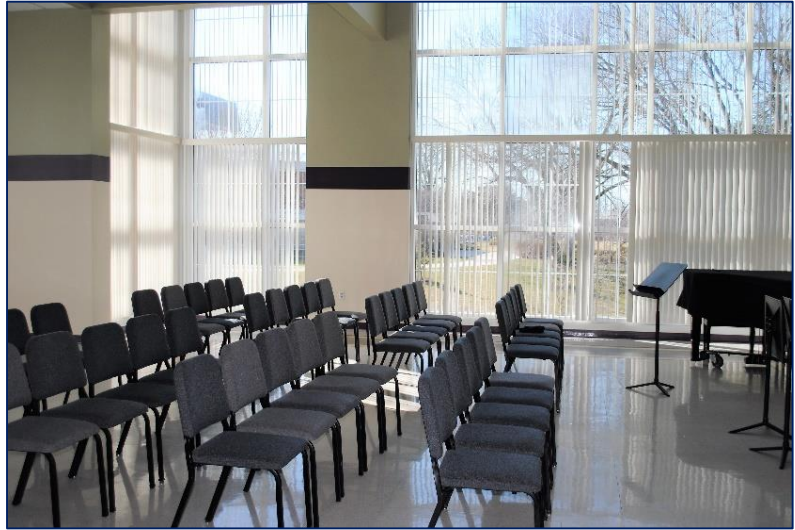
Note: Permission required from Director of Technical Operations and Supervisor of Special Events

Performance Room

“LC PERF”

Space Features

- ✓ Capacity: 78 persons
- ✓ TV with laptop connections
- ✓ Catering available upon request
 - ✓ Additional fees
- ✓ Tables may be set up upon request
- ✓ Door (1)
- ✓ Piano (1)
- ✓ Meets all ADA Requirements



Note: Permission required from Director of Technical Operations and Supervisor of Special Events

Prayer/Seminar Room

“LC SEM”

Space Features

- ✓ Capacity: 18 persons
- ✓ Layout: Rows of chairs
- ✓ Piano
- ✓ Hymnals
- ✓ Various side tables and extra chairs available
- ✓ Meets all ADA Requirements



Note: Permission required from Director of Technical Operations and Supervisor of Special Events