



Living at or Commuting to Etown

Hear from Residence Life, Commuter Engagement &
Campus Safety

Summer Communications

- July 1 and August 2

We look forward to welcoming you on [check-in day](#) – **August 23**

Learn more about our [residence halls](#)

- We provide [specific furniture](#) that must remain in the room.
- There are no elevators in the residence halls, but there will be many volunteers to help you move in.
- Label your belongings with your building & room number before moving in.
- Be aware of [what you should bring](#) (and what you should not bring)

We look forward to welcoming you on [check-in day](#) – **August 23**

- There are many spaces on campus for commuters to use between classes (to study or relax).
- There are specific [parking areas](#) for commuter students.
- You'll meet other commuting students during August Orientation.

- Campus Safety is available 24/7/365. Security@etown.edu
- Safety escorts are provided from any location on campus to another location on campus (students return to campus at night & would like a safety escort from the parking lot to their residence hall, for example)
- Train and airport transportation is provided to and from (request thru Campus Safety at least 24 hours in advance)

- [Parking regulations](#) are enforced by Campus Safety
- [EC Alert](#) is our campus emergency notification system. Students will update emergency contact information each semester during their Preliminary Check-in, and this information will be used for our EC Alert system.
- [Livesafe app](#) allows students to stay informed and report tips (supports photos and video attachments).

- CS Team available 24/7

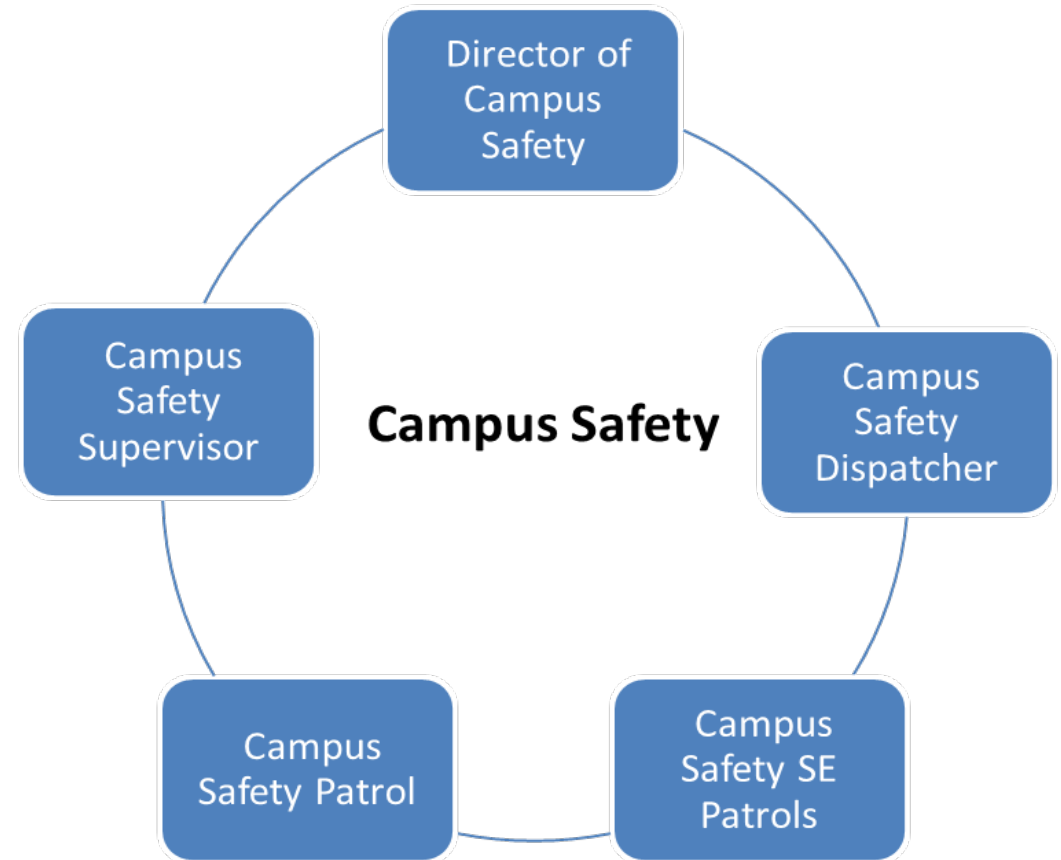
HOW TO REPORT AN EMERGENCY

Contact Campus Safety

Dial 717-361-1111

Non emergency

Dial 717-361-1264





12-1:45 pm – Lunch & Explore: Meet up with your student & then...

Visit the **Resource Fair** to learn about resources & meet Etown staff, *Brossman Commons KAV*

Talk to the Academic Advising team about **Schedule Questions**, *Brossman Commons, 2nd floor*

Tour our **Residence Halls**, *leave from Brossman Commons concourse, 1st floor*

Visit the **College Store**, *Brossman Commons, 1st floor*

Student athletes, visit your coach, *Thompson Gym*

Get your **ID picture** taken, *Leffler Chapel*

Enjoy **lunch** sometime during this timeframe – *Brossman Commons, 2nd floor*

1:45 pm – our next session begins in Leffler Chapel

1:45 pm – An Insider's Guide to Etown (hear from current Etown students)

2:15 pm – Empowering Success: Expectations, Autonomy and Growth

3 pm – Until August